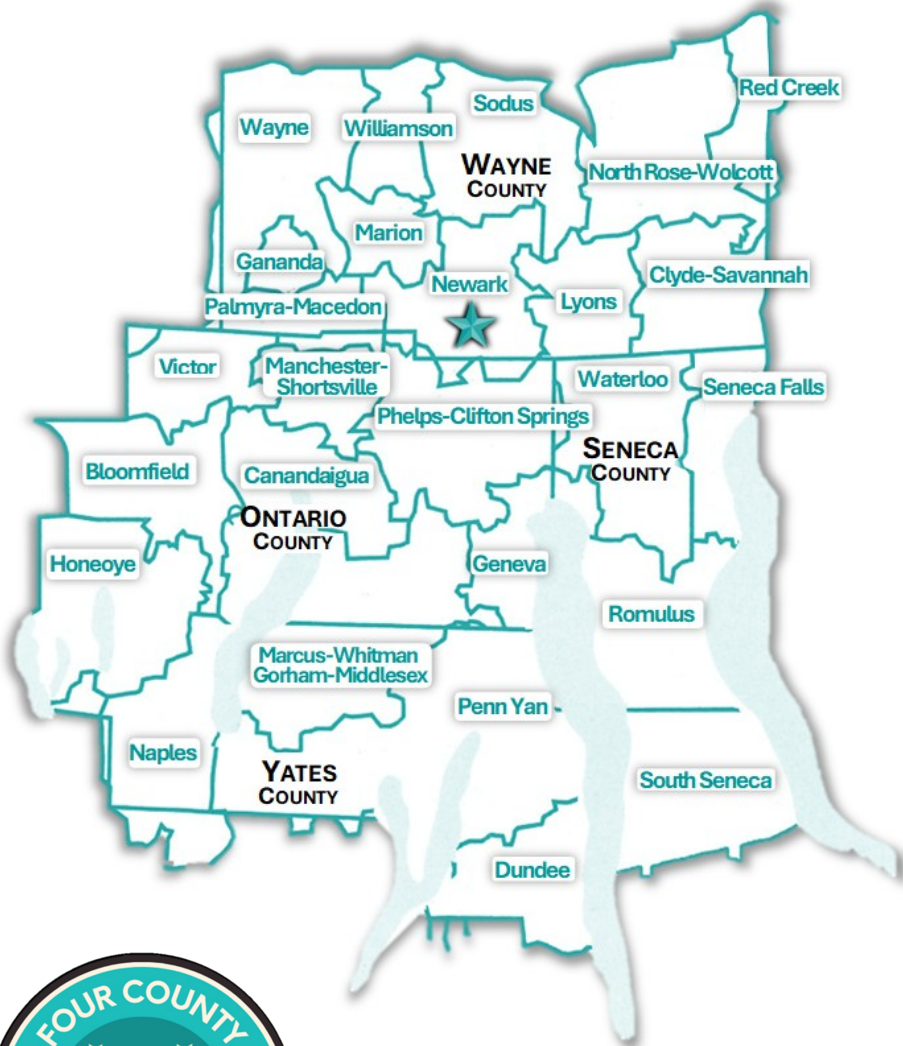


# FOUR COUNTY SCHOOL BOARDS ASSOCIATION

## Map of Area School Districts



**Four County School Boards Association**  
**Howard Dennis, Executive Director**  
131 Drumlin Court, Newark, NY 14513  
Phone: (315) 332-7294  
Email: [4countysba@edutech.org](mailto:4countysba@edutech.org)  
Visit us on the web: [www.fourcountysba.org](http://www.fourcountysba.org)

# FACTS & FIGURES

## 2025-2026



## FOUR COUNTY SCHOOL BOARDS ASSOCIATION

SERVING SCHOOL DISTRICT LEADERSHIP IN

ONTARIO, SENECA, WAYNE, AND YATES

COUNTIES SINCE 1975

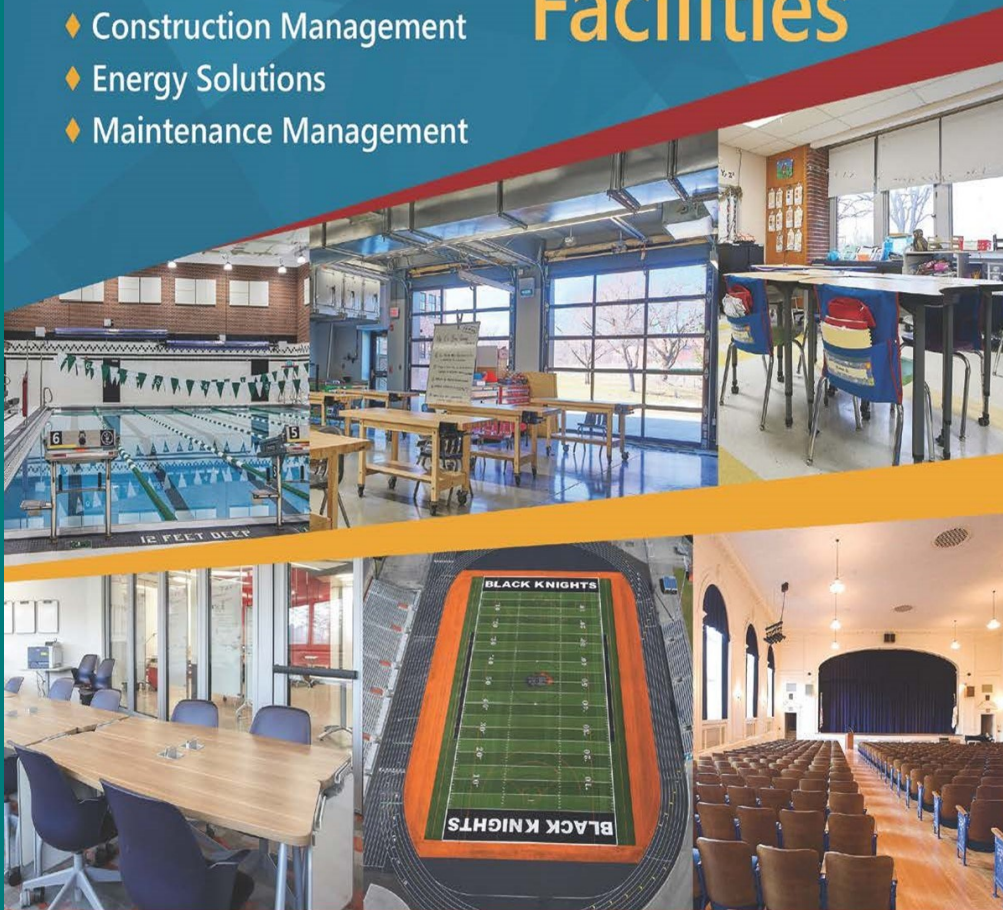


www.cscos.com

# Experts in Educational Facilities

## K-12 Professionals

- ◆ Construction Management
- ◆ Energy Solutions
- ◆ Maintenance Management



## C&S is proud to continue supporting the Four County School Boards Association!

[cscos.com/expertise/k-12-education/](http://cscos.com/expertise/k-12-education/)

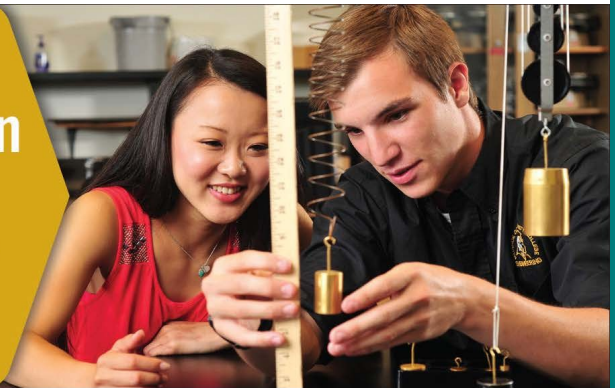
### Williamson Central School (continued)

The Elementary School academic offerings include full day kindergarten, a well-established UPK Program for four year olds, a strong focus on early literacy, hands-on math and science programs, and a school wide character education program. The Middle School academic programs include strong core curriculum, accelerated Math, Science and ELA courses, and a Technology lab where students focus on the National Gateway to Technology Program. Students attending the High School in grades 9-2 are offered a wide selection of course offerings. They include a full range of Advanced Placement courses and Gemini (dual credit) courses, School to Work experiences, Career Pathways Options, and project Lead the Way Pre-Engineering courses. Approximately 89% of our graduating seniors earned Regents diplomas, and 57% earned Advanced Regents diplomas. Students are offered several mentoring and leadership opportunities through the many clubs and extra-curricular activities available.

### COMMUNITY

Williamson is an agricultural community with several local farm markets and stands that supply apples and other fresh produce to the world market. Local manufacturing employers include Dr. Pepper Snapple Group, Westinghouse, and Baldwin Richardson Foods Co. Each May, area residents welcome the apple crop with the annual Williamson Apple Blossom Festival. Since 1960, the event has been a traditional celebration in Williamson. There are several organizations with the community that offer a variety of cultural, educational and recreational opportunities to families and students of the district, such as Williamson PTSA, Williamson Recreation, Williamson Booster Club, Gates Hall, and the Williamson Chamber of Commerce.

## What doors can MCC open for your students?



MCC has everything your students need to find their own doorways to success. Transfer programs that give them a strong start on a bachelor's degree. Career programs that lead to rewarding jobs. Over 20 years experience in online learning. And affordability that can save thousands on the final cost of a college education.

Find out more at [www.monroecc.edu](http://www.monroecc.edu)



Inspiring every day.

# Williamson Central School District

4184 Miller Street, P.O. Box 900 Williamson, NY 14589

**Website:** www.williamsoncentral.org

**Phone:** (315) 589-9661

**Superintendent:** E. Bridget Ashton

**Email:** bashton@williamsoncentral.org

**Fax:** (315) 589-7611

**Contact Person:** Kelly Dixon

**Email:** kdixon@williamsoncentral.org

## LOCATION

The town of Williamson is located on the south shore of Lake Ontario, in Upstate New York, in the northwest part of Wayne County. It is located 22 miles east of Rochester and includes most of the township of Williamson along with parts of Marion, Ontario, and Sodus. The town is named after Charles Williamson, a land agent of the Pultney Estate. Williamson is primarily a rural farming town, but since the 1960s after the growth of Rochester-area companies such as Xerox and Eastman Kodak Company, has added bedroom community aspects to the town. Since then employment opportunities include University of Rochester, Rochester Regional Health, and Wegmans Food Markets Inc. Williamson is recognized nationally for its fruit-growing - especially apples, peaches, and cherries - local agriculture also includes dairy farming.

## FINANCIAL INFORMATION

2024-2025 Budget: \$29,126,655

### True Value Tax Rate:

2025-2026	2024-2025	2023-2024
\$16.77	\$14.97	\$19.16

**Approved Oper. Expend./Pupil:** \$16,110

**Dist. Wealth/Pupil:** \$187,090

## TRANSPORTATION

**Square Miles:** 36

**Bused:** 946 **Walkers:** 0

**Comments:** All students in the Williamson Central School District are offered bussing. A very small number of students choose to walk. (Includes out of district placed.)

## STUDENT INFORMATION

### Three Year Enrollment Change:

2025-2026	2024-2025	2023-2024
1,019	946	1,004

### Number/Grade level of Buildings:

(1) UPK-4 (1) 5-8 (1) 9-12

### AVERAGE CLASS SIZE:

K-3	4-6	7-8*	9-12*
19	17	16	19

\*English & Social Studies

## STAFF:

**Instructional Staff:** 126

**Support Staff:** 113

## EDUCATIONAL PROGRAMS

The mission of Williamson Central School District is to provide a learning community that inspires character service knowledge, and wisdom, with the imperative of doing what's best for children. Williamson Central School District serves approximately 1,004 students in grades Pre-K through grade 12. The district is comprised of an elementary school, middle school, and high school. Opportunities for performing arts begin in grade 4, with enrichment opportunities available from Kindergarten through grade 12. Small class sizes, strong support services to meet student needs, high academic standards and continuous improvement are hallmarks of Williamson Central School District.

## TABLE OF CONTENTS

Business Sponsorship .....	3
Association Leadership .....	4
Introduction .....	5
Bloomfield Central School District .....	6-7
Canandaigua City School District .....	8-10
Clyde-Savannah Central School District .....	12-13
Dundee Central School District .....	14-15
Gananda Central School District .....	16-17
Geneva City School District .....	18-19
Honeoye Central School District .....	21
Lyons Central School District .....	22
Manchester-Shortsville Central School District (Red Jacket) .....	24-27
Marion Central School District .....	28
Newark Central School District .....	29
North Rose-Wolcott Central School District .....	30-31
Penn Yan Central School District .....	32-33
Phelps-Clifton Springs Central School District (Midlakes) .....	34-35
Seneca Falls Central School District .....	36-37
Sodus Central School District .....	38-39
South Seneca Central School District .....	40-41
Waterloo Central School District .....	42
Wayne Central School District .....	44-45
Wayne-Finger Lakes Board of Cooperative Educational Services (BOCES) .....	46-47
Williamson Central School District .....	48-IBC
Map/Contact Information .....	Back Cover

# PROUD SPONSOR OF THE FOUR COUNTY SCHOOL BOARDS ASSOCIATION



[SEIdesigngroup.com](http://SEIdesigngroup.com)

Rochester  
Albany  
Binghamton  
Buffalo

## Wayne-Finger Lakes BOCES (continued)

college. Attendance is half day for either one or two years. Generally, seniors attend classes in the morning and juniors attend in the afternoon; however, juniors or seniors can enroll in either time slot in select programs.

**Special Education:** Special Education programs are provided for students with disabilities, including those who need social, functional, communication, and physical skills development in addition to specific learning strategies. A six-week summer school program is provided for students whose Individualized Education Program (IEP) requires a 12-month school year. Related services are provided for students in these programs by occupational therapists, physical therapists, adaptive physical education instructors, psychologists, social workers, counselors, speech/language therapists, instructors of the visually impaired, and assistive technology specialists. Costs for them are variable. Additionally, a Least Restrictive Environment (LRE) support service for schools is available.

**Itinerant Personnel:** Itinerant Services are provided by BOCES staff who are shared by two or more districts, usually on a Full- Time Equivalent (FTE) basis. This arrangement enables component districts to increase their offerings without adding full-time positions. They are directly billed to the sharing districts. Other services of a support nature are also included in this category. (BOCES aid is unavailable for support positions and services that are otherwise aided.) An initial offering of specific personnel is based on assumptions about final requests for the coming year. However, requests for Itinerant Services can occur throughout the year and need not be restricted to the positions on the initial list. Once requested an Itinerant Service is a commitment for the entire school year. Subject and special areas in which itinerant teachers generally are found are listed below. (These are only a few of the subject and special areas that may be shared.)

**Direct Instruction:** Specialized programs are provided for identified groups of students such as members of academic teams, technical/career students, gifted and talented, college-bound, youth-at-risk, peer mediators and students serving on student councils. These programs are provided on a collaborative basis for districts that may not have enough students to justify additional staff or expenditures.

**Instructional Support:** Instructional Support encompasses areas of the educational program that enhance the quality of education for students. Included are opportunities for collaborative curriculum development, staff development at all levels and coordination of extensive learning materials and services. This section also provides the planning, technical support and coordination necessary to the integration and use of computers, software and network resources in the various curriculum areas.

**Non-Instructional Support:** This area covers a variety of programs and services that assist in the efficient operation and management of a school district while not directly impacting the education of students. The Genesee Valley/Wayne- Finger Lakes Educational Technology Service offerings, including LAKENet, are found in this section. Other non-instructional support services deal with the administrative and personnel areas of school district operations.

## REGION

The Wayne-Finger Lakes region is a premier location between Rochester and Syracuse known for its 11 glacial lakes providing scenic views, a robust agricultural industry, and four-season vacation experiences. The Finger Lakes region blends several ways of life; from generational farming to a booming technology industry, there are no shortage of job opportunities to explore. Many school districts in the region provide personalized learning experiences, extracurricular activities, and competitive clubs and sports teams that consistently compete at the state level. Recreationally, this region has something for everyone. Those that prefer lake life will enjoy endless boating, fishing, kayaking and swimming in the summer months, and winter months provide ample opportunity for skiing, snowboarding and ice skating. With a number of well-maintained State Parks in the area, hiking, biking and camping are top of the list from Spring to Fall.

# Wayne-Finger Lakes Board of Cooperative Educational Services (BOCES)

131 Drumlin Court, Newark, NY 1453

Website: [www.wflboces.org](http://www.wflboces.org)

Phone: (315) 332-7400

Fax: (315) 332-7325

Interim District Superintendent: Cathy Hauber, Ed.D.

Contact Person: Cindy Murray

Email: [Cathleen.hauber@wflboces.org](mailto:Cathleen.hauber@wflboces.org)

Email: [Cindy.murray@wflboces.org](mailto:Cindy.murray@wflboces.org)

## DESCRIPTION

Wayne-Finger Lakes BOCES encompasses five counties (Ontario, Seneca, Wayne, Yates, and Cayuga) in the Finger Lakes region of Upstate New York. We serve a wide range of students with different skills, abilities and needs at our five Special Education Centers, two Technical and Career Centers and our Pathways Technology Early College High School (PTECH). Four of our Special Education Centers are housed in component districts (Manchester-Shortsville CSD, Phelps-Clifton Springs CSD, Gorham-Middlesex CSD, and Newark CSD). Our campus in Williamson houses the Wayne Education Center as well as the Wayne Technical and Career Center and the Finger Lakes Technical and Career Center is a standalone campus in Stanley, NY. Both PTECH and our Regional Support Center are located in Newark, NY.

STAFF: 1,150

2025-20026 BUDGET: \$187,271,426

P-16 - Instructional and Support: 701

Non-Instructional: 449

## GENERAL SERVICE CATEGORIES

Administration  
 Career/Technical and Continuing Education  
 Special Education  
 Itinerant (Shared) Personnel  
 Direct Instruction  
 Instructional Support  
 Non-Instructional Support  
 P-Tech  
 Early College Access  
 Grant Writing  
 Community Schools  
 Home Instruction and Tutoring

## COMPONENT SCHOOL DISTRICTS

**Wayne County:** Clyde-Savannah, Gananda, Lyons, Marion, Newark, North Rose-Wolcott, Palmyra-Macedon, Red Creek, Sodus, Wayne, Williamson

**Ontario County:** Bloomfield, Canandaigua, Geneva, Honeoye, Manchester-Shortsville (Red Jacket), Marcus Whitman (Gorham-Middlesex), Naples, Phelps-Clifton Springs (Midlakes), Victor

**Seneca County:** Romulus, Seneca Falls, Waterloo

**Yates County:** Dundee, Penn Yan

## EDUCATIONAL PROGRAMS/SERVICES

**Administration:** This category includes the everyday administrative services necessary for the administration of all other services, as well as those specifically requested of administrators and the BOCES board by school districts. The District Superintendent's assistance to school boards with the search process for school superintendents is an example of an administrative service.

**Career/Technical and Continuing Education:** The individualized courses offered through our two Technical and Career Centers afford high school students an opportunity to acquire technical career skills, which are transferable to the workplace. Focusing on technical career, advanced manufacturing and the service areas, these programs also prepare students to further pursue their interests at post-secondary training schools and in

## THE MEMBERS OF FOUR COUNTY SCHOOL BOARDS ASSOCIATION THANK THE FOLLOWING BUSINESSES FOR THEIR SUPPORT OF THIS ANNUAL PUBLICATION AND THROUGHOUT THE YEAR.

Bond Schoeneck & King Attorneys .....	11
C&S Companies Construction Management Group ..... <b>GOLD SPONSOR</b> .....	IFC
Campus Construction Management ..... <b>SILVER SPONSOR</b> .....	31
Ferrara Fiorenza PC .....	43
Finger Lakes Community College ..... <b>Silver Sponsor</b> .....	33
Gordon W. Jones Associates Architects, P.C. ....	20
Hunt Engineers, Architects, & Surveyors .....	41
LaBella Associates, D.P.C. ....	35
Leonard Bus Sales, Inc. ....	39
Mengel Metzger Barr & Co. LLP ..... <b>Silver Sponsor</b> .....	7
Monroe Community College .....	IBC
NYSIR ..... <b>SILVER SPONSOR</b> .....	10
Reliant Community Credit Union .....	45
Rural Schools Association .....	17
SEI Design Group ..... <b>GOLD SPONSOR</b> .....	2
St. John Fisher University .....	23
Stark TECH   Day Automation ..... <b>SILVER SPONSOR</b> .....	15

## Four County SBA LEADERSHIP AND STAFF

**PRESIDENT** - Robin Johnson (Penn Yan)

**VICE PRESIDENT** - Julie Nevelizer (Newark)

**TREASURER** - Beth Thomas (Canandaigua)

**IMMEDIATE PAST PRESIDENT** - Joe McNamara (Seneca Falls)

**EXECUTIVE DIRECTOR** - Howard Dennis

**COORDINATOR OF MEMBERSHIP SERVICES** - Sue Wyatt

## PRESIDENTS OF MEMBER BOARDS OF EDUCATION

Pam Nakoski	Bloomfield CSD
Jeanie Grimm	Canandaigua CSD
Jennifer Sullivan	Clyde-Savannah CSD
Robert Neu	Dundee CSD
John Finnegan	Gananda CSD
Kelley Monson	Geneva CSD
Tori Penrod-Clark	Honeoye CSD
Martha Bailey	Lyons CSD
James Simmons	Manchester-Shortsville CSD
Michele Kuelling	Marion CSD
Russ Harris	Newark CSD
Lucinda Collier	North Rose-Wolcott CSD
Kenneth Walker	Penn Yan CSD
Tracy Altman	Phelps-Clifton Springs CSD
Michael Mirras	Seneca Falls CS
Jason Walters	Sodus CSD
Peter Jennings	South Seneca CSD
Pat Tellier	Waterloo CSD
Daniel Wildey	Wayne CSD
Pam Pendleton	Wayne-Finger Lakes BOCES
Angela DeFisher	Williamson CSD

### Wayne Central School (continued)

courses offered by BOCES, and the district has an exemplary program for children with disabilities and special learning needs.

Counseling, speech and psychological services are provided at each school. Eligible children can enroll in universal pre-kindergarten or pre-school special needs programs.

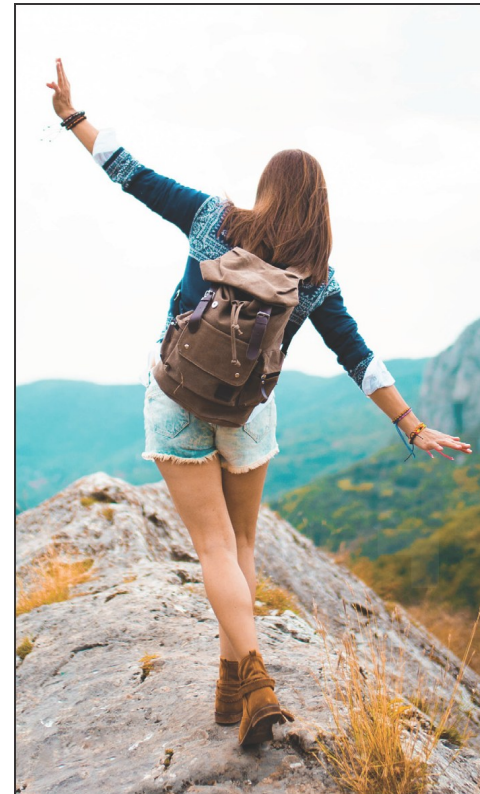
Each of the school buildings integrate the latest technology into their classrooms and are linked through a fiber-optic network. Our facilities are regularly updated to enhance student opportunities.

### COMMUNITY

Nearly 18,500 persons reside within the school district. Residents are employed at varied firms in the Greater Rochester area, as well as Wayne and Ontario counties. The Ginna Nuclear Power Station is located on the lakeshore in the Town of Ontario, and Dolomite Corporation has a large gravel mining and asphalt operation in the Town of Walworth. Several high tech optical, alternative energy, and manufacturing firms are located within the district, and each community has varied retail, service, commercial and industrial firms.

Extensive parental involvement in local schools is evident through the parent groups, booster clubs, school based decision-making teams, and school volunteers. The community includes a mixture of rural and suburban neighborhoods. Public libraries are located in Walworth & Ontario and offer a variety of services and resources.

Ontario and Walworth both offer extensive town recreational programs and community park facilities. A town Museum is operated by the Walworth Historical Society in the hamlet of Walworth, and Ontario Historical and Landmark Preservation Society at Heritage Square reflects local cultural and educational traditions.



we want to help you  
do more and be more

At Reliant, we recognize that we don't all fit in the same mold. We celebrate your journey and want to help you along your path—wherever that path takes you!

LEARN MORE ABOUT THE BENEFITS OF MEMBERSHIP AT [RELIANTCU.COM](https://www.reliantcu.com).

800.724.9282  
reliantcu.com

**reliant**  
CREDIT UNION  
achieve life

Membership eligibility required. Federally insured by NCUA.

# Wayne Central School District

6200 Ontario Center Road, P.O. Box 155, Ontario Center, NY 14520-0155

Website: [www.waynecsd.org](http://www.waynecsd.org)

Phone: (315) 524-1000

Fax: (315) 524-1049

Superintendent: Dr Joseph Siracuse

Contact Person: Cynthia Monahan

Email: [jsiracuse@waynecsd.org](mailto:jsiracuse@waynecsd.org)

Email: [cmonahan@waynecsd.org](mailto:cmonahan@waynecsd.org)

## Location

Wayne Central School District was formed in 1949 by centralization of 21 rural and union free schools in northwestern Wayne and northeastern Monroe counties. The school district serves 95% of the Town of Ontario, 75% of the Town of Walworth, and portions of the Towns of Williamson, and Macedon, each in Wayne County, and the Towns of Webster and Penfield in Monroe County. Lake Ontario forms the northern border of the school district. Our neighboring school districts are Webster, Penfield, Gananda, Palmyra-Macedon, Marion, and Williamson.

## FINANCIAL INFORMATION

2025-2026 Budget: \$59,605,455

### True Value Tax Rate:

2025-2026	2024-2025	2023-2024
14.46	\$14.97	\$16.43

Approved Oper. Expend./Pupil: \$16,507

Dist. Wealth/Pupil: \$219,106

## TRANSPORTATION

Square Miles: 66

Bused: 1950 Walkers: 102

Comments: All students are eligible for transportation.

## EDUCATIONAL PROGRAMS

Currently the district's four schools, Wayne Primary, Wayne Elementary, T.C. Armstrong Middle School and James A. Beneway High School, provide the opportunity for each child to succeed. Our students excel academically and achieve distinction in the arts, musical performances and athletics at the local, regional and state levels.

Benchmarks for student achievement are set in each grade and subject. Instructional programs nurture and challenge individual student abilities and prepare them as citizens and consumers in the 21st century. School improvement teams at each building support the shared decision-making process. The program at the high school includes internship, work experience opportunities, and a comprehensive senior project requirement. Curriculum development emphasizes literacy and numeracy skills.

The middle school offers accelerated math and science courses. The high school offers honors, advanced placement, college credit and pre-engineering courses, as well as the International Baccalaureate diploma designation. Students may enroll in trade and technical

## INTRODUCTION

The Four County School Boards Association is a not-for profit membership organization offering leadership and support services to 21 school boards including the Wayne-Finger Lakes Board of Cooperative Educational Services (BOCES). The Association's members provide education for approximately 35,000 students and represent taxpayers who reside in rural, small city, and suburban school districts in Ontario, Seneca, Wayne, and Yates Counties. The total population of the four-county area is about 262,300.

The Association is committed to implementing its strategic plan. A synopsis of the plan includes:

**Vision Statement:** A respected and strong collective voice for excellence in public education

**Mission Statement:** The Four County School Boards Association will provide training and advocacy opportunities to support and advance excellence in public education and promote the achievement of all students through effective governance.

**Beliefs:** With students at the heart of our work, the Four County School Boards Association is committed to acting professionally, collegially and ethically.

### Goals and Objectives

- 1) The Association will attract, develop and retain effective local school board members.
- 2) The Association will provide timely training and professional development opportunities of exceptional quality in a cost-effective manner.
- 3) The Association will establish and maintain mutually beneficial partnerships.
- 4) The Association will positively impact legislative, regulatory, and other constituent groups.
- 5) The Association will inform boards of relevant and emerging issues and trends in public education.
- 6) The Association will strive for a high level of membership satisfaction.

The information included in this booklet pertains to the **2025-2026** school year. Data is provided using the General Formula Aid Output Report (GEN) to determine "approved operating expenditures per pupil" and the Public Excess Cost Aid Report (Pub) to determine "district wealth per pupil" (based on income). Please contact the school superintendent if you have any questions.

Four County SBA thanks you for your interest in and support of our public schools. A digital copy of this book and a complete copy of our vision, mission, and Goals can be obtained from Four County SBA at [www.fourcountysba.org](http://www.fourcountysba.org).

# Bloomfield Central School District

45 Maple Avenue, Suite A, Bloomfield, NY 14469

Website: [www.bloomfieldcsd.org](http://www.bloomfieldcsd.org)

Phone: (585) 657-6121

Superintendent: Andrew Doell

Email: [adoell@bloomfieldcsd.org](mailto:adoell@bloomfieldcsd.org)

Fax: (585) 657-6060

Contact Person: Kristin Warren

Email: [kristinwarren@bloomfieldcsd.org](mailto:kristinwarren@bloomfieldcsd.org)

## LOCATION

The Bloomfield Central School District is located in the western portion of Ontario County. The district population covers primarily the Towns of East Bloomfield, West Bloomfield, and Bristol. Both the Elementary and Middle/High Schools are located in the Village of Bloomfield which is approximately 25 miles south of Rochester.

## FINANCIAL INFORMATION

2025-2026 Budget: \$24,318,250

### True Value Tax Rate:

2025-2026	2024-2025	2023-2024
\$14.36	\$15.40	\$16.53

Approved Oper. Expend./Pupil: \$17,609

Dist. Wealth/Pupil: \$239,499

## TRANSPORTATION

Square Miles: 66.852

Bused: 668 Walkers: 20

Comments: Buses travel close to 295,000 miles per year.

## EDUCATIONAL PROGRAMS

Highlights of the academic program offered in the East Bloomfield Central School District include: Universal PreK (full-day), full-day kindergarten, and a media arts course for students in grades 1-5 at the Bloomfield Elementary School. The Bloomfield Middle/High School offers a wide variety of challenging academic courses, including Gemini course offerings, Advanced Placement offerings, and International Baccalaureate course offerings. In addition, students in the Middle/High School have opportunities to access a state-of-the-art Hydroponics Classroom and state-of-the-art CNC machines in our Agricultural Education and Technology course offerings. The District's International Baccalaureate Program offers students the opportunity to earn an IB Diploma or to enroll in individual courses if they would like. The Diploma program entails a two-year course of study, along with requirements of an extended essay, Theory of Knowledge classes, and participation in community/action/service (CAS) hours. International Baccalaureate offerings include Language A Higher Level (English), Language B Standard Level (Spanish), History of the Americas Higher Level, Psychology Standard Level, and Biology Higher Level and Standard Level, Design Technology Standard Level, Physics Standard Level, Math Studies Standard Level, Mathematics Standard Level, and Visual Arts Higher Level and Standard Level. In

## STUDENT INFORMATION

### Three Year Enrollment Change:

2025-2026	2024-2025	2023-2024
688	736	747

### Number/Grade level of Buildings:

(1) UPK-5 (1) 6-12 Middle/High

### AVERAGE CLASS SIZE:

K-3	4-6	7-8*	9-12*
15	15	20	18

\*English & Social Studies

## STAFF

Instructional Staff: 90

Support Staff: 62

# Because every decision shapes a community.



What looks simple rarely is.  
Every policy.  
Every contract.  
Every call you make affects real people.  
Students, staff, and families.

At Ferrera Fiorenza, PC,  
we help school districts across  
New York State navigate complex  
legal challenges with clarity and  
confidence, so they can focus  
on what matters most.

**FF** | FERRERA FIORENZA PC  
ATTORNEYS AND COUNSELORS AT LAW

[ferrerafirm.com](http://ferrerafirm.com)  
Syracuse | Rochester | Binghamton

# Waterloo Central School District

109 Washington Street, Waterloo, NY 13165

**Website:** www.waterloocsd.org

**Phone:** (315) 539-1500

**Fax:** (315) 539-1504

**Superintendent:** Sarah Cupelli

**Contact Person:** Stephanie Wilson

**Email:** sarah.cupelli@waterloocsd.org

**Email:** stephanie.wilson@waterloocsd.org

## LOCATION

The Waterloo Central School District is located approximately equidistant between the north ends of Seneca and Cayuga Lakes, the two largest lakes of the world famous Finger Lakes of New York State. The district is bisected by the section of the Barge Canal System which connects the two lakes. Waterloo is a village in Seneca County, New York.

## FINANCIAL INFORMATION

2025-2026 Budget: \$50,018,410

### True Value Tax Rate:

2025-2026	2024-2025	2023-2024
\$11.63	\$13.93	

**Approved Oper. Expend./Pupil:** \$16,794

**Dist. Wealth/Pupil:** \$150,939

## STUDENT INFORMATION

### Three Year Enrollment Change:

2025-2026	2024-2025	2023-2024
1,420	1,417	

### Number/Grade level of Buildings:

(1) Pre-K-2 (1) 3-5 (1) 6-8 (1) 9-12

### AVERAGE CLASS SIZE:

K-3	4-6	7-8*	9-12*
15	16	16	17

\*English & Social Studies

### STAFF:

**Instructional Staff:** 224

**Support Staff:** 136

## EDUCATIONAL PROGRAMS

The WCSD offers an early college high school program geared towards first generation or low-income students. The program allows students the opportunity to earn their regents diploma and associates degree at the same time. This program is setting up our students success for a bright future.

## COMMUNITY

Waterloo is quiet and peaceful and a place to call home, boasting a low cost of living and plenty of recreational activities. There are plenty of parks, trails and lakes to explore as well as great restaurants and shops to explore. Waterloo is a great place to live where you can lead a safe and comfortable life.

## Bloomfield Central School (continued)

In addition to its academic offerings, the District also offers students opportunities to participate in our award-winning fine arts programs. Students may participate in musical and drama productions, varied art classes, and vocal and instrumental music classes. Art classes include Computer Art, Painting, Ceramics, Sculpture, and Studio in Art. Instrumental music courses include Concert Band, Jazz Band, and various small ensembles. Vocal music offerings include High School Chorus and Jazz Choir. The employees and the students of Bloomfield enjoy showing off our District. If you are interested in a tour, please feel free to call the main office of the appropriate school building and make an appointment to learn about the type of education we provide our students.

## COMMUNITY

The Bloomfield School District is comprised of both rural settings and small community neighborhoods. Residents enjoy country or small town living with easy access to the many fine restaurants, museums, theaters, sporting events, parks, trails, and other attractions found throughout the Finger Lakes and Greater Rochester area. Minutes away from Rochester, Bristol Ski Resort, the Marvin Sands Performing Arts Center, and a number of Finger Lakes, residents of the District take advantage of the seasons and the resources offered in the region. The strength of the Bloomfield School District comes from strong community support and the strength of our communities is, in part, found in the Bloomfield Central School District.



# ACCOUNTING THAT EDUCATES.

370 Woodcliff Drive, Suite 2A  
Fairport, NY 14450  
(585) 423-1860

**Tom Zuber, CPA, Partner**  
tzuber@mmb-co.com

**Mike DeBadts, CPA, Partner**  
mdebadts@mmb-co.com

**Melissa Duerr, CPA, Partner**  
mduerr@mmb-co.com

**John Rynkiewicz, CPA, Partner**  
jrynkiewicz@mmb-co.com



Canandaigua + Rochester + Elmira  
+ Latham + Queensbury

[mmbaccounting.com](http://mmbaccounting.com)  @mmbandco



BUSINESS ADVISORS AND CPAS

# Canandaigua City School District

143 North Pearl Street, Canandaigua, NY 14424

**Website:** [www.canandaiguaschools.org](http://www.canandaiguaschools.org)

**Phone:** (585) 396-3700

**Fax:** (585) 396-7306

**Superintendent:** Jamie M. Farr

**Contact Person:** Deborah Sundlov

**Email:** [farrj@canandaiguaschools.org](mailto:farrj@canandaiguaschools.org)

**Email:** [sundlovd@canandaiguaschools.org](mailto:sundlovd@canandaiguaschools.org)

## LOCATION

The Canandaigua City School District consists of approximately 88 square miles. Located to the north and the west side of Canandaigua Lake, the District encompasses all of the City and Town of Canandaigua, and Portions of the Towns of Bristol, East Bloomfield, Farmington, Gorham, Hopewell, and South Bristol.

## FINANCIAL INFORMATION

2025-2026 Budget: \$93,427,725

### True Value Tax Rate:

2025-2026	2024-2025	2023-2024
\$13.84	\$14.22	\$15.09

**Approved Oper. Expend./Pupil:** \$16,309

**Dist. Wealth/Pupil:** \$238,487

## TRANSPORTATION

**Square Miles:** 88

**Bused:** 2,370 **Walkers:** 663

**Comments:** Transportation available for Kindergarten-.25 miles, Grades 1-5-.5 miles, Grade 6-.7 miles, Grades 7-8-1.5 miles, and Grades 9-12-2.0 miles

## EDUCATIONAL PROGRAMS

**Vision Statement:** One Community, Transforming Lives

**Mission Statement:** Explore, Enrich, Empower

**Explore** - Provide a range of opportunities that represent the various cultures, preferences, and aspirations of all learners.

**Enrich** - Create differentiated and individualized experiences, which engage all learners.

**Empower** - Provide students, employees, and community both voice and choice.

The District challenges students with high academic standards and expectations for achievement through innovative programming and instruction, enhanced by the delivery of a full array of social, emotional, and developmental support systems.

We champion a never-ending school, home, and community commitment to character education based on core virtues that progress to greater sophistication as the child matures:

- Respect leads to Civility
- Responsibility leads to Accountability
- Honesty leads to Integrity
- Kindness leads to Compassion
- Effort leads to Perseverance
- Healthy Choices lead to Healthy Living

District curricula are in alignment with the New York State Common Core Standards of

## South Seneca Central School (continued)

Tompkins-Seneca-Tioga BOCES located in Ithaca. Students are given the opportunity to take part in “hands-on-learning” through internships, including the New Visions Program, which provides students the chance to study in the medical field at the Cayuga Medical Center or the environmental sciences at Cornell University.

## TECHNOLOGY

South Seneca Central School District was selected as one of the top 100 wired schools in the United States. The district makes available to student and staff eight state-of-the-art computer classrooms, a distance learning lab, and computers in every classroom. Staff are trained extensively in the instructional applications of technology.

## COMMUNITY

There are four New York State Parks and two federal preserves within or adjacent to boundaries of the district. Residents enjoy the superior educational, cultural, and recreational benefits of Cornell University, Finger Lakes Community College, Hobart and William Smith Colleges, Ithaca College, and Tompkins-Cortland Community College, all approximately a half hour drive from the district.

Farming is the dominant activity in this region. Wheat, corn, milk, livestock, and fruits (especially grapes) are produced in this area of the Finger Lakes. The area is famous for its many vineyards. The South Seneca School District and Five Points State Correctional Facility are the major employers within the boundaries of the district, and many residents make the short drive to Geneva, Seneca Falls, or Ithaca for their livelihoods.

The deliberate quality of rural life and the physical beauty of this region are highly prized by the persons who are fortunate enough to live in this area of the Finger Lakes.



# South Seneca Central School District

7263 Main Street, Ovid, NY 14521

Website: [www.southseneca.org](http://www.southseneca.org)

Phone: (607) 869-9636, Ex 4147

Fax: (607) 869-2529

Superintendent: Kyle Colunio

Contact Person: Miguel Andrade

Email: [kcolunio@southseneca.org](mailto:kcolunio@southseneca.org)

Email: [mandrade@southseneca.org](mailto:mandrade@southseneca.org)

## LOCATION

The communities that make up the South Seneca School District are located within approximately one hundred and fifty square miles of picturesque countryside between New York State's longest Finger Lakes - Cayuga and Seneca. The college towns of Ithaca and Geneva are about twenty miles to the south and north respectively. The large cities of Rochester and Syracuse are a little over one hour's driving distance away.

## FINANCIAL INFORMATION

2025-2026 Budget: \$28,231,993

### True Value Tax Rate:

2025-2026	2024-2025	2023-2024
\$8.58	\$9.65	\$9.67

Approved Oper. Expend./Pupil: \$22,327

Dist. Wealth/Pupil: \$178,790

## TRANSPORTATION

Square Miles: 130

Bused: 601 Walkers: 66

Comments: Students above grade 1 walk to school if they live in the village.

## EDUCATIONAL PROGRAMS

The Elementary School (PK-5), which includes half day pre-kindergarten and full-day kindergarten, strives for social and academic success for all students. We have a research-based Balanced Literacy Program and Math Program supported by up to date library media center and technology labs. Students receive science lab experiences in grades 2-5. Students have enrichment opportunities in science, music, and art. Tiered levels of student Academic Intervention Services and Special Education Services provide strong student support.

The Middle School (6-8) is a center of dynamic, youthful enterprise. With a rich panoply of community service projects, our students grow as citizens in direct proportion to their contributions. We provide intensive personal and academic support in preparation for the high school years.

The Senior High (Grades 9-12) offers a comprehensive academic program while providing numerous school activities. A variety of clubs and a broad selection of year-round sports ensure that students have a vast array of opportunities. Numerous College courses are offered which allow students advanced study and the ability to earn college credit during their high school years. Students are offered vocational training through the

## STUDENT INFORMATION

### Three Year Enrollment Change:

2025-2026	2024-2025	2023-2024
667	667	653

### Number/Grade level of Buildings:

(1) PK-5 (1) 6-12

### AVERAGE CLASS SIZE:

K-3	4-6	7-8*	9-12*
15	15	16	16

\*English & Social Studies

## STAFF:

Instructional Staff: 105 Support Staff: 90

## Canandaigua City School (continued)

Learning. A mature system to utilize a wide range of assessment data to drive improvements in instruction is in place.

The Superintendent, building principals, and many teachers utilize social media to better communicate with parents and community members and the District operates a Facebook page which is seen by several thousand followers each day. The district also has a presence on "X" (@canandaiguacsd) and Instagram (@canandaiguacsd).

## Highlights

Canandaigua Academy offers 15 advanced placement courses, 19 Gemini courses offered in collaboration with Finger Lakes Community College, and a full International Baccalaureate diploma program.

The District is committed to Wellness programs and education for faculty, staff, and students. It has earned two Gold Level Fit-Friendly Worksite Awards from the American Heart Association in recent years.

## Curriculum & Program

In Canandaigua, the NYS Common Core curriculum is systematically modified to ensure it meets the developing needs of our specific pupils. The educational program includes extensive technology use; all students in Grades 6-12 are issued a personal mobile computing device, which is used both in class and at home. Students at the UPK, 1-5 level have access to Chromebooks in each classroom. Kindergarten classes have carts with iPads for each student. This technology is supported both within the regular budget and by the District's share of NYS Smart Schools Bond Act monies.

The District uses Schoology as a Learning Management System for grades 3-12 and Seesaw for grades UPK-2. The District mobilizes extensive student and family support, with personnel trained in early recognition of social, emotional, and developmental needs.

The Assistant Superintendent for Instruction coordinates educational program initiatives, and a full-time Professional Developer delivers workshop offerings throughout the year to allow faculty to access professional learning in-person, virtually and asynchronously.

## Other Highlights of the General Program

- Universal Pre-Kindergarten on campus and available at community organizations. Universal Pre-Kindergarten is full day and transportation is provided.
- Full-day kindergarten.
- A generous range of technology course offerings, particularly at Canandaigua Academy.
- A wide array of in-district special education services.
- Award-winning performing arts opportunities, including orchestra, theatre, band, and numerous choral groups. Musical ensembles perform regularly throughout the school year. Over 60 co-curricular clubs and organizations, from grades 3-5 through high school.
- Celebration of our distinguished alumni through three programs: Graduates of Distinction, Visual and Performing Arts Hall of Fame, and the Athletic Hall of Fame.

The interscholastic athletics program features over 1,150 roster spots for student-athletes on 80 teams in grades 7-12. These teams participate in over 1,100 contests each year as a member of the Monroe County Athletic League. We also offer two unified sports programs in collaboration with the Special Olympics.

The District has a state-of-the-art track and field venue and a competition artificial turf field and stadium at the high school site and eight competition tennis courts at the Middle

(continued on next page)

*Canandaigua City School (continued)*

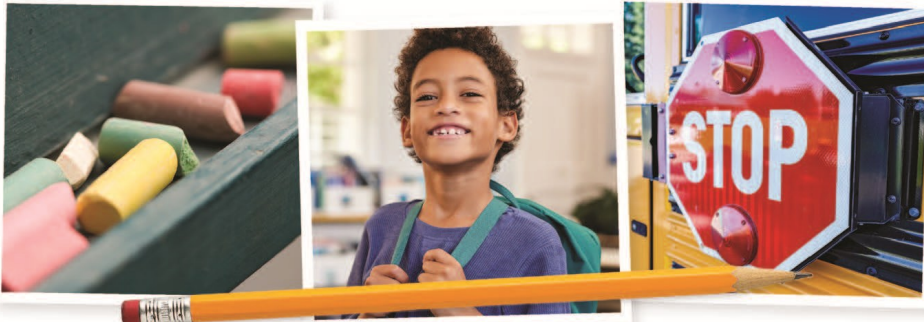
School campus, plus enhanced security at all building entrances. Recent upgrades have been completed at the Primary-Elementary and Middle School resulting in upgrades of classrooms, bathrooms, hallways, and auditoriums.

Throughout the year, 22 sports booster clubs affiliated with Canandaigua interscholastic teams offer a full range of sports camps, serving hundreds of Canandaigua area youth.

**COMMUNITY**

Canandaigua, situated at the foot of spectacular Canandaigua Lake is “The Chosen Spot”, a vibrant community long known for its support of quality education. Canandaigua possesses a delightful downtown core, its own health care system and unique recreational, cultural, and shopping opportunities. Residents enjoy a small-town, rural character that incorporates urban conveniences, easy access to the NYS Thruway and a close proximity to Rochester. Each summer, thousands of tourists enjoy beautiful Canandaigua Lake, municipal parks, art festivals, Roseland Waterpark, Sonnenberg Gardens, the Granger Homestead and popular and classical concerts at the Constellation Brands – Marvin Sands Performing Arts Center. Canandaigua is a gateway to Finger Lakes wine country. The world-class New York Wine & Culinary Center is a highlight for visitors and residents alike. Wintertime features downhill skiing at a nearby Bristol Mountain, cross country on the Ontario County Rail Trail, ice fishing, and indoor skating at the Canandaigua Civic Center. With its rich history, dynamic present and bright future, Canandaigua prides itself on its natural, human, and educational resources.

**All about schools**



**Pencils, books, students.** They and dozens of other items and images instantly bring to mind schools. They're so integral to education, in fact, that it's almost impossible to think about any of them without automatically visualizing a school.

And when it comes to insurance companies, it's equally challenging to talk about schools without thinking of NYSIR.



We serve only New York districts and BOCES after all, and our policies and risk management services are tailored just for them. Some of the education professionals at those schools help run the company, too. That's the way it's been since the reciprocal was founded over 35 years ago.

**Teachers. Students. Desks. Buses.**  
They're all about schools.  
And so are we.

**FOR MORE INFO, VISIT NYSIR.ORG.** NEW YORK SCHOOLS INSURANCE RECIPROCAL  
333 EARLE OVINGTON BOULEVARD, SUITE 905, UNIONDALE, NEW YORK 11553

*Sodus Central School (continued)*

acquire foundational skills and develop college and career-readiness through an internship opportunity and a personal finance class. Our students demonstrate readiness to graduate and successfully enter the next steps in their lives by completing a senior capstone project that culminates the K-12 Spartan school experience.

**CLUBS and ACTIVITIES**

Our students enjoy Art Club, Outdoor Club, Chess Club, Drama Club, ECO Club, Garden Club, Manga & Anime, Masterminds, Musical, National Honor Society and Junior National Honor Society, Science Club, Science Olympiad, Ski/Snowboard Club, Sodus Gay-Straight Alliance, Student Council, Sunshine Club, Tech Club, Varsity Club, Video Game Club, and Yearbook.

**SPORTS**

Cross Country, Soccer, Tennis, Football, Volleyball, Alpine Skiing, Basketball, Bowling, Indoor Track, Swimming, Wrestling, Baseball, Golf, Softball, and Track & Field.

**COMMUNITY**

Sodus Central School serves much of the Town of Sodus plus a small part of Arcadia. The district covers 66 square miles of primarily agricultural land including the villages of Sodus and Sodus Point and the unincorporated area of Wallington, Sodus Center, South Sodus, Alton, and Joy. Sodus is a rural, agricultural community with a diverse population. Many community residents commute to work in Rochester, which is located 30 miles west of Sodus. The recreational opportunities of the Sodus Point waterfront community, Brantling Ski Resort, the Sodus Chamber of Commerce Fall Festival, the area bed and breakfast industry, and the beauty and symmetry of cherry and apple country each serve as attractions to the District. There are many active community service clubs in the district.

The road ahead is changing.  
But our commitment  
to safety is not.

Leonard Bus Sales...  
making the road ahead  
easy for you.



**TRANS TECH**

800.554.4504

Bergen | Deposit | Middletown | Rome | Saratoga Springs

leonardbus.com



# Sodus Central School District

P.O. Box 220, Sodus, NY 14551

Website: [www.soduscsd.org](http://www.soduscsd.org)

Phone: (315) 483-5221

Superintendent: Nelson Kise

Email: [nkise@soduscsd.org](mailto:nkise@soduscsd.org)

Fax: (315) 483-4755

Contact Person: Steve Moore

Email: [Smooore@soduscsd.org](mailto:Smooore@soduscsd.org)

## LOCATION

Sodus Central School serves much of the Town of Sodus plus a small part of Arcadia. The district covers 66 miles of primarily agricultural land including the village of Sodus and Sodus Point and the unincorporated areas of Wallington, Sodus Center, South Sodus, Alton, and Joy.

## FINANCIAL INFORMATION

2025-2026 Budget: \$34,233,478

### True Value Tax Rate:

2025-2026	2024-2025	2023-2024
\$11.72	\$13.42	\$14.58

Approved Oper. Expend./Pupil: \$16,992

Dist. Wealth/Pupil: \$138,469

## TRANSPORTATION

Square Miles: 66

Bused: 1,085 Walkers: 0

Comments: All students are eligible

## STUDENT INFORMATION

### Three Year Enrollment Change:

2025-2026	2024-2025	2023-2024
1,085	1,069	1,114

### Number/Grade level of Buildings:

(1) PreK-3 (1) 4-6 (1) 7-12

### AVERAGE CLASS SIZE:

K-3*	4-6	7-8*	9-12*
16	16	17	16

\*English & Social Studies

**STAFF:** Instructional Staff: 127 Support Staff: 118

## EDUCATIONAL PROGRAMS

Sodus is an innovative school district that has focused its efforts in recent years on curriculum development and implementation, best practice reading and mathematics instruction, improved graduation rates and sustained leadership.

The District partners with community and county agencies extensively to provide quality support and services to ensure the success of every child. Sodus is a PBIS school – where respect, responsibility, and kindness are explicitly taught, supported, and expected of every individual in the school community.

Students in grades 3PK through 3 attend the Sodus Elementary School. The Universal Pre-K program includes full-day instruction along with a Head Start full-day program. Sodus Intermediate School serves students in grades 4-6. Students in grades 7-12 attend the Sodus Jr/Sr High School and benefit from opportunities for many college level courses offered in collaboration with Finger Lakes Community College and Cayuga Community College, as well as career and technical education at the Wayne Finger Lakes Career Center, and a High School Student In-Service Day that is planned by and for students. Sodus students are recognized for their performance in the District's outstanding vocal and instrumental music program, school musical and drama productions, and artwork on the regional and state level.

Our students move forward with a solid and well-rounded foundation. They cultivate a sense of Spartan Pride in our school district through involvement in extracurricular activities and/or sports; build a sense of citizenship through service to our community;



Bond, Schoeneck & King's school law practice provides outstanding legal services to K-12 schools across New York State.

**Kirsten Barclay Alex Brockhuizen Sara Colacino  
Connor Johnson Anne McGinnis Laura Purcell  
Kate Reid Jen Schwartzott Katie Stiffler**



To learn more, visit  
[bsk.com/practices/school-law](http://bsk.com/practices/school-law)  
or scan the QR code.



ALBANY BUFFALO ELMIRA LONG ISLAND NEW YORK CITY **ROCHESTER**  
SARATOGA SPRINGS SYRACUSE UTICA WESTCHESTER  
350 Linden Oaks - Third Floor, Rochester, NY 14625 • 585.362.4700 • [BSK.COM](http://BSK.COM)

# Clyde-Savannah Central School District

215 Glasgow Street, Clyde, NY 14433

**Website:** www.clydesavannah.org

**Phone:** (315) 902-3000

**Fax:** (315) 923-2560

**Superintendent:** Michael Hayden

**Contact Person:** Doreen Patchen

**Email:** mhayden@clydesavannah.org

**Email:** Doreen.patchen@clydesavannah.org

## LOCATION

Clyde-Savannah Central School District is located in rural upstate New York midway between Rochester and Syracuse. The District serves students in Pre-Kindergarten through grades 12 living in portions of southeastern Wayne County and northwestern Seneca County. Clyde-Savannah Central School District has two buildings: Clyde-Savannah elementary (Pre-K through 5) and Clyde-Savannah Junior/Senior High School (6-8 and 9-12).

## FINANCIAL INFORMATION

2025-2026 Budget: \$29,141,410

### True Value Tax Rate:

2025-2026	2024-2025	2023-2024
\$12.34	\$	17.88

**Approved Oper. Expend./Pupil:** \$16,491

**Dist. Wealth/Pupil:** \$130,230

## TRANSPORTATION

**Square Miles:** 88.2

**Bused:** 605 **Walkers:** 83

**Comments:** Transportation is available and provided for all students. They can choose not to use the school transportation.

## EDUCATIONAL PROGRAMS

Clyde-Savannah CSD is leading the way in innovative approaches to learning. Three separate schools, Clyde-Savannah Elementary (PK-6), Junior High School (7-9), and High School (10-12), are divided into two buildings across an expansive and welcoming campus.

Steeped in local history and purple and gold pride, the Clyde-Savannah School District serves as a hub of the community. From comprehensive standards-based programming with a personalized approach to teaching and learning to competitive athletic programming, Clyde-Savannah strives to educate the whole child.

Clyde-Savannah Elementary lays the groundwork for success with a solid foundation of appropriate skills for each grade level. Students excel in ROCKS (Respect, Organization/On task, Citizenship, Kindness, and Safety) behaviors and thrive in an environment that gives all students equitable access to high-quality instruction. Student Support Services are comprehensive and allow ongoing academic, social, and emotional growth.

Clyde-Savannah Junior and Senior High School prepares students for life beyond graduation through rigorous academics, engaging electives, leadership opportunities, and meaningful community service. At the heart of the secondary experience is the EAGLE Way,

## Seneca Falls Central School (continued)

The Seneca Falls Central School District consists of four schools.

Frank Knight Elementary School:	UPK-Grade 2
Elizabeth Cady Stanton	Grade 3-Grade 5
Seneca Falls Middle School	Grade 6-Grade 8
Mynderse Academy	Grade 9-Grade 12

Mynderse Academy provides students with instruction along with Special Education services, academic intervention services, reading support, and counseling services. Numerous co-curricular and extra-curricular offerings are provided to round out students' high school experiences. They include Student Council, Honor Society, Block M Club, Model United Nations, Inter-Scholastic Athletics, Drama Club, Chess Club, Seneca Green Club, and Ski Club to name a few. Mynderse Academy also offers dual-enrollment college-level courses including PLTW. Sources of Strength and Power of Peace are utilized to support students' SEL.

Seneca Falls Middle School provides students with instruction along with Special Education services, Academic Intervention Services, reading support, and counseling services. Extra-curricular offerings are provided and include Student Council, Modified Sports (Soccer, Football, Volleyball, Cross-Country, Tennis, Basketball, Wrestling, Baseball, Softball, and Lacrosse), and Drama Club. A strong Parents' Team provides support to the school and students.

Elizabeth Cady Stanton Elementary School and Frank Knight Elementary School provide elementary students with a solid foundation in the Science of Reading, which supports all instructional programs (ELA, Math, Science and Social Studies). Students also receive instruction in Physical Education, Art, Music, Computer Skills, and Digital & Media Literacy (ECS). Expanded choral and instrumental program opportunities are provided to students in grades 3, 4, and 5. Formal instrumental lessons are offered to fifth graders. Special Education services, reading support, and counseling services are also provided. Strong Parents' Teams provide support to both the school and students.

Seneca Falls Central School District is proud of its Organic Recycling Program. Since its launch in 2014, our program has diverted approximately 137,000 pounds (68.5 tons) of food waste from landfills, helping reduce greenhouse gases and creating nutrient-rich soil for our Farm to School Gardens.

Seneca Falls CSD Transportation Department works hard on a daily basis to keep students safe. The school bus drivers and bus monitors go through extensive mandated trainings. Seneca Falls Central School District believes that a student's day begins and ends with us. The Transportation Department sets the tone for the day the students will have in school and will strive to make that a positive experience.

The Seneca Falls Central School District sits within the towns of Seneca Falls, Tyre, Fayette and a very small area of Waterloo. The area is rich in history. Seneca Falls is the Birthplace of Women's Rights. It is home to the Women's Rights National Park and the National Women's Hall of Fame. Seneca Falls sits along the Erie Canal Heritage Corridor.

## COMMUNITY

The Seneca Falls Central School District sits within the towns of Seneca Falls, Tyre, Fayette and a very small area of Waterloo. The area is rich in history. Seneca Falls is the Birthplace of Women's Rights. It is home to the Women's Rights National Park and the National Women's Hall of Fame. Seneca Falls sits along the Erie Canal Heritage Corridor.

# Seneca Falls Central School District

98 Clinton Street, PO Box 268, Seneca Falls, NY 13148

Website: [www.senecafallscsd.org](http://www.senecafallscsd.org)

Phone: (315) 568-5818

Fax: (315) 712-0535

Superintendent: Dr. Michelle Reed

Contact Person: Monica Kuney

Email: [mreed@senecafallscsd.org](mailto:mreed@senecafallscsd.org)

Email: [mkuney@senecafallscsd.org](mailto:mkuney@senecafallscsd.org)

## FINANCIAL INFORMATION

2025-2026 Budget: \$38,180,389

### True Value Tax Rate:

2025-2026	2024-2025	2023-2024
\$17.88	\$17.90	\$18.04

Approved Oper. Expend./Pupil: \$15,420

Dist. Wealth/Pupil: \$205,786

## TRANSPORTATION

Square Miles: 57

Bused: 659 Walkers: 554

**Comments:** Seneca Falls CSD Transportation Department works hard on a daily basis to keep students safe. The school bus drivers and bus monitors go through extensive mandated trainings. Seneca Falls Central School District believes that a student's day begins and ends with us. The Transportation Department sets the tone for the day the students will have in school and will strive to make that a positive experience.

## MISSION STATEMENT

The Seneca Falls Central School District is committed to fostering academic excellence, equitable opportunities, and the unique potential of every student. By creating safe, nurturing, and supportive environments, we aim to develop confident, independent, and responsible individuals who are prepared to succeed academically and contribute meaningfully to their communities.

## VISION

Rooted in a strong community; inspiring excellence for every student to learn, grow, and shape their future.

For over 150 years, the residents of the Seneca Falls Central School District have valued quality education in their community and that tradition continues with this current vision of education.

education of the whole child

**a safe learning environment**

**the development of the student**

**a commitment towards collaboration and communication**

**a focus on student learning**

strong instructional technology focus

## STUDENT INFORMATION

### Three Year Enrollment Change:

2025-2026	2024-2025	2023-2024
1213	1,256	1,236

### Number/Grade level of Buildings:

(1) UPK-6 (1) 7-12

### AVERAGE CLASS SIZE:

K-3	4-6	7-8*	9-12*
16	20	17	15

\*English & Social Studies

### STAFF:

**Instructional Staff:** 157

**Support Staff:** 114

## Clyde-Savannah Central School (continued)

which promotes Excellence, Attitude, Growth, Leadership, and Empathy and guides both student expectations and school culture.

Students have access to a wide range of Gemini courses for college credit through Finger Lakes Community College, as well as high-interest electives designed to expand their skills and interests. Course offerings include Gemini English 101 and 102, Career and Financial Management, Gemini Pre-Calculus, Gemini Calculus, Gemini U.S. History, Gemini Stress Reduction and Physical Conditioning, Hydroponics, Ceramics, American Sign Language, and Forensics.

Beyond the classroom, students are encouraged to get involved in a variety of clubs and activities that enrich their school experience. Opportunities include Ski Club, Varsity Club, Chess Club, Masterminds, National Elementary Honor Society, National Junior Honor Society, National Honor Society, Student Council, Drama Productions, Technology Club, and E-Sports, ensuring every student can find a place to connect, lead, and grow.

Clyde-Savannah School District proudly supports its staff through innovative, family-friendly initiatives designed to enhance workplace well-being and professional satisfaction. The District offers a free on-site daycare program for all staff members, providing convenient, high-quality childcare that allows employees to remain close to their children throughout the day while they focus on their important work with students. In addition, staff enjoy access to a student-run on-site coffee shop. These investments reflect the District's commitment to supporting those who dedicate themselves to serving our students and community.

## COMMUNITY

The village of Clyde and town of Savannah are located in Wayne County. Our community is rich with agriculture and small industry, home to companies which produce materials for aerodynamics and electronics industries. Many of our residents commute to urban settings for work, but especially love coming home to a small-town, neighborly community. In addition to the several educational, recreational, cultural, and historical activities in nearby Rochester and Syracuse, our community is home to the Montezuma wetlands and Audubon Nature Center.

### About the village of Clyde

Located along the Erie Canal in central New York, the village's rich a flag in Clyde village park history is intimately connected to this famous waterway. As a major source of transportation, many industries and businesses sought to take advantage of Clyde's access to the canal and set up shop within the village. As railroads began to replace the canal, factories still came to Clyde to take advantage of its location between the cities of Syracuse and Rochester. Always proud to call themselves a "small village", this community has never forgotten its treasured past. And the members of the community will be sure to hold onto to its history as they move into their treasured future.

### About the town of savannah

Located along the tracks of the old New York central railroad, the town of savannah has been a patriotic display in the town of Savannah home to families and business for generations going all the way back to 1854 when it was the village of savannah. With its proximity to the unique natural landscapes created by the woodland marshes and wetlands near Crusoe Island, Savannah has been a wildlife destination for outdoor enthusiasts of all kinds. A chance to visit the Audubon Montezuma Center, a major stopping point for migratory birds on the Atlantic flyway, is an opportunity that shouldn't be missed.

# Dundee Central School District

55 Water Street, Dundee, NY 14837-1099

Website: [www.dundeecs.org](http://www.dundeecs.org)

Phone: (607) 243-5533

Fax: (607) 243-7912

Superintendent: Christopher J. Wood

Contact Person:

Email: [suptwood@dundeecs.org](mailto:suptwood@dundeecs.org)

Christopher J. Wood

## LOCATION

Nestled in the hills of New York State Finger Lakes Region, Dundee Central School enjoys being the center of attention in a community of 5,000 people. Due to our rural environment, the school is the nerve center for a community activities and student aspirations. The school is the largest employer in our hamlet with agriculture being the primary industry of the residents. Our students hail from a 77 square mile locale which includes pupils from Starkey and parts of the Reading, Milo, Tyrone, and Barrington townships.

## FINANCIAL INFORMATION

2025-2026 Budget: \$22,736,160

### True Value Tax Rate:

2025-2026	2024-2025	2023-2024
\$7.06	\$7.47	\$8.10

Approved Oper. Expend./Pupil: \$18,697

Dist. Wealth/Pupil: \$191,022

## STUDENT INFORMATION

### Three Year Enrollment Change:

2025-2026	2024-2025	2023-2024
582	602	607

### Number/Grade level of Buildings:

(1) PK-12

### AVERAGE CLASS SIZE:

K-3	4-6	7-8*	9-12*
16	17	16	16

\*English & Social Studies

### STAFF:

Instructional Staff: 78

Support Staff: 67

## TRANSPORTATION

Square Miles: 77

Bused: 308 Walkers: 274

Comments: District does not bus any student within a .6 mile radius of the school district.

## EDUCATIONAL PROGRAMS

The PK-12 Campus of Dundee Central School is nestled between two scenic Finger Lakes - Keuka Lake and Seneca Lake. The integrity of the original 1939 architecture has remained uncompromised in recent renovations. These renovations have been handsomely coordinated resulting in a modern, technologically updated facility that supports a multitude of programs for our students and community residents. The school houses a Wellness Center that is widely used as an instructional venue and also available for use by our community residents.

Although the Elementary School and the Junior/Senior High School are housed under one roof they are two distinct buildings. The Elementary School is very proud of their efforts to continuously monitor the alignment of curriculum, instruction, and assessments. The programs are responsive to the needs of all students including a community and school-based UPK program, full day kindergarten, a wide range of academic enrichment and support services, and a commitment to special needs population. The Elementary School boasts a strong, well balanced, comprehensive literacy program which includes a yearly reading challenge and with the support of our Parent Advisory Council's sponsorship, participation in the Duffy Books distribution program.

## Phelps-Clifton Springs Central School (continued)

The district is known for its dedicated professional staff which, along with the community, is strongly invested in our students and our schools. They are respected and valued, and their accomplishments, and those of our students, are proudly celebrated.

The importance of exceptional literacy and numeracy skills are recognized throughout the district. Without both, our students will be unable to succeed; therefore a great deal of emphasis and resources are placed on these endeavors. Our elementary students are educated in language-rich classrooms, and literacy skills are integrated into all curricula. Students are also responsible for not only knowing the "how" of computations, they are equally responsible for the "why".

The seventh and eighth graders at Midlakes are educated in a separate section of our high school. Our dedicated staff uses a variety of instructional tools and innovative approaches to assist our students in making the critical transition from elementary to high school. Our students enjoy a variety of extra-curricular and interscholastic activities.

High school students are encouraged to pursue a rigorous academic program to prepare them for any path they may choose in life. A variety of elective programs are offered to our students. In addition to courses in the arts and theater, we offer courses in business and technology areas as well. Students taking these courses have an opportunity to work with CAD, architectural advanced courses, hydroponics and much more. The high school program offers a wide variety of free college-credit courses and our students often graduate with 15, 30, and even as many as 45 college credits already accrued. The high school program also includes an extensive array of extra-curricular and interscholastic programs.



BUILDINGS



ENVIRONMENTAL



INFRASTRUCTURE



ENERGY

[www.labellapc.com](http://www.labellapc.com)

# Phelps-Clifton Springs Central School District

1490 Route 488, Clifton Springs, NY 14432

**Website:** www.midlakes.org

**Phone:** (315) 548-6420

**Fax:** (315) 548-6429

**Superintendent:** Nicholas Ganster

**Contact Person:** Pamela Mann

**Email:** nganster@midlakes.org

**Email:** pmann@midlakes.org

## LOCATION

The Phelps-Clifton Springs Central School District is nestled in the heart of the Finger Lakes region between Canandaigua and Seneca Lakes. The metropolitan areas of Rochester and Syracuse are within driving distance with easy access to the New York State Thruway. Midlakes High School, Middle School, Intermediate School and Primary School are all located on the same campus about half-way between the two villages. This district also serves students from the rural towns of Hopewell, Manchester, and Seneca.

## FINANCIAL INFORMATION

2025-2026 Budget: \$47,386,70

### True Value Tax Rate:

2025-2026	2024-2025	2023-2024
\$18.37	\$19.32	\$21.79

**Approved Oper. Expend./Pupil:** \$15,632

**Dist. Wealth/Pupil:** \$161,164

## TRANSPORTATION

**Square Miles:** 90

**Bused:** 1,450 **Walkers:** 0

**Comments:** All students are eligible for transportation.

## EDUCATIONAL PROGRAMS

The Phelps-Clifton Springs Central School district is committed to providing students with a rich educational experience focused on future readiness, while being fiscally responsible to the community and focused on long range stability. The program is defined by data driven decisions, clear learning objectives and an articulated curriculum supported with an abundance of technological resources which lead to meaningful, authentic, measurable learning for all students. The educational program is built upon a foundation of values, character, honor, and morals where students feel supported and nurtured yet challenged with independence and rigor. The district values innovation, risk-taking and vulnerability as well as the skills and attitudes needed to help our students to adapt to an ever changing global society.

Parents and the community at large are essential in the education of our students. The schools serve as a center of our communities, and evoke strong school and community spirit and pride.

## Dundee Central School (continued)

An outstanding partnership has been created to support these literacy efforts with Five Star National Bank and the Our Town Rocks and Reads Committee. Dundee Elementary School's well rounded school experience also includes instruction in art, music, physical education, computer technology and library skills. There are several opportunities for students to participate in extra-curricular activities which include band, chorus, drama, student government, intramurals, drum line, athletics, and STARS (Students Taking Asset Responsibility Seriously). The elementary school was recognized as an emerging school of character by the NYS Chapter of the National Character Education Partnership.

The Dundee Junior/Senior High School touts a schedule that requires students to take a minimum of (7) courses a week. Programs are responsive to the needs of all students and are offered in a multitude of ways. A host of Gemini college courses are offered to students in the fields of English, Spanish, Economics, Pre-Calculus, Psychology, and History. A plethora of great clubs and interscholastic athletics are available to our students coupled with tremendous opportunities in music and drama.

Dundee Central School is a small school with big school pride. We enjoy overwhelming support from our community. We work in tandem to mold responsibility, caring, and academically prepared future citizens through personalized learning environments.

Dundee Central School is one of the best kept secrets of the Finger Lakes.

## STUDENT INFORMATION

### Three Year Enrollment Change:

2025-2026	2024-2025	2023-2024
1450	1,498	1,508

### Number/Grade level of Buildings:

(1) UPK-6 (1) 7-12

### AVERAGE CLASS SIZE:

K-3	4-6	7-8*	9-12*
15	21	24	20

\*English & Social Studies

### STAFF:

**Instructional Staff:** 192

**Support Staff:** 122

# EMPOWERING EDUCATION

Innovative Technology for Safer, Smarter Schools

From the front doors to the classroom and everywhere in between, Day Automation by Stark Tech delivers customized solutions that support your mission to educate and protect.



starktech.com



# Gananda Central School District

1500 Dayspring Ridge, Walworth, NY 14568

Website: [www.gananda.org](http://www.gananda.org)

Phone: (315) 986-3521

Superintendent: Dr. Shawn Van Scoy

Email: [scanscoy@gananda.org](mailto:scanscoy@gananda.org)

Fax: (315) 986-2003

Contact Person: Staci Harrison

Email: [sharrison@gananda.org](mailto:sharrison@gananda.org)

## LOCATION

The Gananda Central School District is located about 20 miles east of Rochester's city center on the Wayne-Monroe County Line. Approximately 4,000 residents in portions of the towns of Walworth and Macedon live within the district's boundary.

## FINANCIAL INFORMATION

2025-2026 Budget: \$27,849,569

### True Value Tax Rate:

2025-2026	2024-2025	2023-2024
20.79	\$21.98	\$23.86

Approved Oper. Expend./Pupil: \$19,561

Dist. Wealth/Pupil: \$190,474

## TRANSPORTATION

Square Miles: 16.5

Bused: 866 Walkers: 0

Comments: Bussing is available to all students

## EDUCATIONAL PROGRAMS

The Gananda Central School system's formula for success is a combination of smaller-than-average class sizes and individual attention along with a variety of extracurricular opportunities and a range of honors, advanced placement and college-preparatory courses. The result is widespread satisfaction with the quality of the community's schools.

### Mission

The Gananda Central School District educates all students for success.

### The District:

#### Athletics

Gananda schools offer a wide variety of athletic programs, with sports such as football, basketball, track, swimming, golf, lacrosse, volleyball, baseball, and softball. In addition to a full range of interscholastic athletic programs, Gananda offers youth recreation opportunities including sports and aquatics instruction.

#### State-of-the-art Technology

The Gananda CSD enhances its curriculum with state-of-the-art technology, including Smart Boards, Chromebooks, iPads, Android tablets, Macs, and PCs. The district is moving ahead with a personalized learning initiative which includes all students and teachers using technology as an instructional tool. There is a BYOD network available for Middle and High School students, and Guest Wi-fi at all schools.

## STUDENT INFORMATION

### Three Year Enrollment Change:

2025-2026	2024-2025	2023-2024
866	851	837

### Number/Grade level of Buildings:

(1) UPK-5 (1) 6-8 (1) 9-12

### AVERAGE CLASS SIZE:

K-3	4-6	7-8*	9-12*
19	20	16	18

\*English & Social Studies

### STAFF:

Instructional Staff: 135

Support Staff: 87

## Penn Yan Central School (continued)

PYA provides instruction and curriculum to continue to ensure that students are competitive upon graduation for the 21st century. The Academy is a state-of-the-art facility that rivals the learning spaces found in a collegiate setting. PYA offers a strong educational program including AP courses, Dual Enrollment Gemini Courses, and Project Lead the Way courses in both Engineering and Biomedical Sciences, along with a strong Agricultural program and multiple State recognized programs in CTE.

## COMMUNITY

The historic and picturesque village of Penn Yan supports a variety of small businesses. The internationally known Birkett Mills, Penn Yan's oldest industry established in 1797, is the world's largest producer of buckwheat products. Other businesses, dairy and other types of farming, agriculture and a lively tourist trade are the backbone of the area's economy. The community is anchored by a series of business parks which bring light industrial work to the area. The hillside provides excellent growing conditions for a variety of superior wine grapes that are processed locally in the nationally famed wineries surrounding the lake. Wineries and craft breweries help to build on the local tourist industry. The local Mennonite community helped to raise the first building at the Windmill Farm and Craft market, a shopping area frequented by visitors. The majority of district residents are blue collar workers, primarily farming.

**START HERE.  
GO ANYWHERE.**

Whether it's a course or a degree, we're here to help you reach your goals. Experience personalized classes and hands-on learning to propel your future forward.

Classes are offered online and in-person in Canandaigua, Victor, Geneva, and Newark.

Visit [fllc.edu](http://fllc.edu) to get started today.



# Penn Yan Central School District

One School Drive, Penn Yan, NY 14527

Website: [www.pycsd.org](http://www.pycsd.org)

Phone: (315) 536-3371

Superintendent: Dr. Gregory Baker

Email: [gbaker@pycsd.org](mailto:gbaker@pycsd.org)

Fax: (315) 536-0068

Contact Person: Katie Champlin

Email: [kdean@pycsd.org](mailto:kdean@pycsd.org)

## LOCATION

Incorporated as a village in 1833, Penn Yan is tucked between large, rolling hills on the northern most tip of beautiful Keuka lake in the heart of New York's Finger Lakes region. The unusual name of the village is taken from "Pennsylvania" and "Yankee" in honor of its first settlers who migrated here from Pennsylvania and New England during the 18th century.

## FINANCIAL INFORMATION

2025-2026 Budget: \$42,328,700

### True Value Tax Rate:

2025-2026	2024-2025	2023-2024
\$7.10	\$7.62	\$8.16

Approved Oper. Expend./Pupil: \$17,389

Dist. Wealth/Pupil: \$268,523

## TRANSPORTATION

Square Miles: 175

Bused: 858 Walkers: 423

Comments: PK-grade 12 is door to door.

Bused students include Mennonite students.

## EDUCATIONAL PROGRAMS

Penn Yan Elementary School (PreK-5) students are engaged in a strong data driven system to get all students off to a solid start in both ELA and Math, along with a well-rounded program that looks at the whole child. This is supported by a strong foundational reading program and other strong intervention and literacy programs to further achievement. Approximately 520 students are served at the Elementary School.

Penn Yan Middle School (6-8) uses an interdisciplinary approach supported by a strong Personalized Learning format and parent-teacher partnerships for its approximately 300 students. The middle school boasts strong core academic programs along with offerings in Art, Home & Careers, Technology and Music. Advanced courses are offered in Math, Science, and Languages other than English (LOTE.) Clubs, sports and intramural offerings allow students to experience many activities as they move through their school career.

Penn Yan Academy (9-12) is an accredited high school housing approximately 415 students. PYA recognizes that the educational process encompasses the rights, responsibilities, differences, and needs of all students, staff, parents, and community.

*Gananda Central School (continued)*

## Proven Performance

Gananda Schools enjoy an outstanding reputation for an exemplary and balanced curricular and extra-curricular program designed to meet the needs of all students.

## COMMUNITY SUPPORT: THE SECRET TO OUR SUCCESS STORY

Gananda delivers an exceptional educational experience made possible through active partnership with our closely-knit community. From the development of the strategic plan to daily volunteer work in schools, parents and other community members play an essential role in the success of the schools. Community members serve as members of the Board of Education, on committees and provide valuable input on school-related issues.

**RURAL SCHOOLS ASSOCIATION  
OF NEW YORK STATE**

- Powerful advocacy for rural schools.
- Meaningful professional collaboration and partnerships.
- High-quality conferences and training events.
- Personalized support from experienced staff who understand your district's challenges.

**Strengthen your voice and your impact.  
Learn more at [rsny.org](http://rsny.org)**

# Geneva City School District

400 West North Street, Geneva, NY 14456

Website: [www.genevacsd.org](http://www.genevacsd.org)

Phone: (315) 781-0400

Superintendent: Lawrence "Bo" Wright

Email: [bo.wright@genevacsd.org](mailto:bo.wright@genevacsd.org)

Fax: (315) 828-7760

Contact Person: Kim Kerr

Email: [kkerr@genevacsd.org](mailto:kkerr@genevacsd.org)

## LOCATION

Geneva is an attractive small city of historic significance located on Seneca Lake. The school district includes the City and Town of Geneva and portions of our neighboring towns.

## FINANCIAL INFORMATION

2025-2026 Budget: \$75,895,691

### True Value Tax Rate:

2025-2026	2024-2025	2023-2024
\$16.06	\$15.50	\$16.68

Approved Oper. Expend./Pupil: \$15,883

Dist. Wealth/Pupil: \$145,475

## STUDENT INFORMATION

### Three Year Enrollment Change:

2025-2026	2024-2025	2023-2024
1,923	2,030	2,075

### Number/Grade level of Buildings:

(1) K-2 (1) PK, 3-5 (1) 6-8 (1) 9-12

### AVERAGE CLASS SIZE:

K-3	4-6	7-8*	9-12*
18	17	18	17

\*English & Social Studies

### STAFF:

Instructional Staff: 306

Support Staff: 225

## TRANSPORTATION

Square Miles: 42.13

Bused: 1244 Walkers: 679

**Comments:** All Head Start students receive transportation. All kindergarten students are bussed regardless of mileage, with the exception of parent drop off and pick up. Bus pickup stations will be located 0.5 miles from either of the elementary schools. Transportation will be provided for students in grades 1st Through 5th who reside more than 0.9 miles from the school they attend and all students 6th through 12th grades who reside more than one and one-half (1 1/2) miles from the school they attend. Transportation for students with disabilities not covered above will be provided transportation upon written request of the school physician the Committee on Special Education and in accordance with the law. Such cases will be reviewed annually.

## EDUCATIONAL PROGRAMS

The Geneva City School District serves more than 2000 students in grade Pk-12. The size of the district is 42.13 square miles and is comprised of a high school, middle school, two elementary schools, district administrative offices and out central services facility.

## North Rose-Wolcott Central School (continued)

educating the whole child by focusing on the behavioral, academic and social-emotional needs of students.

North Rose-Wolcott High School prepares students for a variety of pathways, offering college-level courses for those interested in pursuing postsecondary education as well as programs for those preparing to enter the workforce. The Cougar OPS alternative program provides additional supports for student success through a school-within-a-school model. A wide variety of extracurricular and athletic opportunities contribute to an incredible school community and culture.

North Rose-Wolcott is known for its exemplary visual and performing arts programs with our students receiving many awards in competition, including national art awards. The high school has an art gallery that showcases the work of students and graduates, and students participate in elaborate musical productions each year. Students have the opportunity to participate in choral and instrumental music beginning in elementary school, and music performances are held throughout the year at all three schools.

## COMMUNITY

The school district is located within a rural setting which provides many opportunities for recreation. Lake Ontario provides boating and fishing for sports enthusiasts, and Chimney Bluffs State Park offers scenic hiking and picnicking. The school district serves as a community center for villages located within its boundaries.

## Building Bright Futures with Four County School Boards Association's Member Districts



Follow us!



Campus Construction Management  
1241 Pittsford-Victor Road, Pittsford, NY 14534  
[campuscmg.com](http://campuscmg.com) | 585.545.6567

# North Rose-Wolcott Central School District

11631 Salter-Colvin Road, Wolcott, NY 14590

Website: [www.nrwcs.org](http://www.nrwcs.org)

Phone: (315) 594-3141

Fax: (315) 828-7760

Superintendent: Michael Pullen

Contact Person:

Email: [mpullen@nrwcs.org](mailto:mpullen@nrwcs.org)

Michael Pullen

## LOCATION

The North Rose-Wolcott Central School District is a consolidated district located in Eastern Wayne County. It is a 124 Square mile district comprised of all or portions of the towns of Wolcott, Rose, Butler, Lyons, Huron, Savannah, and Sodus. The many acres of land located on the shores of Lake Ontario, including Sodus Bay and Port Bay support a variety of agricultural endeavors. The most plentiful, apples, peaches, cherries, pears, and other fruits, are grown for fresh consumption and are available locally, regionally and beyond in several super markets.

## FINANCIAL INFORMATION

2025-2026 Budget: \$37,150,000

### True Value Tax Rate:

2025-2026	2024-2025	2023-2024
\$9.70	\$14.14	\$13.62

Approved Oper. Expend./Pupil: \$16,800

Dist. Wealth/Pupil: \$149,167

## TRANSPORTATION

Square Miles: 124

Bused: 824 Walkers: 250

## STAFF:

Instructional Staff: 155

Support Staff: 109

## EDUCATIONAL PROGRAMS

The North Rose-Wolcott Central School District's mission is *We will create a community of belonging and a mindset of continuous learning by building collaborative relationships.* The vision is *North Rose -Wolcott is a community where all learners are engaged in experiences that grow their individual potential.* The district is organized into an elementary (K-4), middle (5-8) and high school (9-12).

North Rose-Wolcott Elementary provides Universal Pre-K for three and four-year-olds. North Rose-Wolcott Elementary focuses on positive, proactive character education and social-emotional learning in addition to academic success. Students at NRWE also participate in physical education, music, art, and STEAM classes.

North Rose-Wolcott Middle School operates for grades 5 and 6 that offers increased time for English Language Arts and mathematics, and another for grades 7 and 8 that reflects the rigor and responsibility of a departmentalized schedule. Emphasis is placed on

## Geneva City School (continued)

The Geneva City School District prides itself on the quality of academic programs offered to our students. Our students attend the finest universities service academies two-year liberal arts and technical program in the nation. Advanced Placement offering encompass numerous academic courses of study, in addition, we offer a range of Gemini course which resent the opportunity for our students to revived credits from the Finger Lakes Community College.

Social emotional learning continues to be a priority for us as we engage students in this learning in a way that is integrated into their academic day.

The Geneva City School District offers over 54 clubs and extra-curricular activities. Some of these clubs, activities include Chess Club, Drama Club, Newspaper Club, Student Council, 4H Club, Green Club, Hispanic Leadership Club, Trailblazers Club, Quiz Bowl, Book Club, Board Game Club, and Dance Club.

Our district also offers a wide range of interscholastic athletic and fine arts opportunities for our students. Twenty-seven Varsity, 19 modified and 13 Junior Varsity athletic teams participate in Section 5 interscholastic athletic competition. Geneva is also proud to sponsor marching band, concert band, jazz band and a variety of other musical ensembles. In addition, we have a strong vocal music program with a myriad of choral and vocal ensemble opportunities for our students.

The Geneva City School District continues to build on its strong professional ties with the area colleges and universities such as Hobart and Williams Smith Colleges, University of Rochester, Finger lakes Community College and a host of others, our professionals engage in pre-service mentoring professional development activities, serve an adjunct faculty, and obtain advanced credentialing through these institutions.

## COMMUNITY

With our central Finger Lakes location, Geneva is a community with a great deal to offer. Seneca Lake offers breathtaking views and water recreation. There are many architectural gems, among them the gothic revival St. John's Chapel on Hobart and William Smith Colleges (HWS) campus and Trinity Church on main Street - both designed or influenced by renowned architect and Hobart alum Richard Upjohn. The Smith Opera House is a treasure both for its Richardsonian Romanesque architecture, recognized nationally by major preservation organizations, and the wealth of music and theatre shows it brings to the city. The region's burgeoning wine industry has brought award-winning wineries like Billsboro and White Springs to our shores, with many more just a stone's throw away. Downtown shops like Earthly Possessions Boutique add taste and character to the shopping experience, while fixtures like Club 86 boast a history of jazz and blues.

HWS is a wonderful resource, from the life its students add to the knowledge and prestige of visitors, professors and alumni. Cornell Agritech and Technology Farm also allow for numerous educational partnerships, and Finger Lakes Community College hosts a Geneva campus.

One of the most amazing aspects of the city is the incredible range of diversity amongst our population, which boasts a wonderful range of colors and creeds not found often in this largely rural area. This convergence of cultures and ethnicities enriches the city and those that live here. There is no better place to witness this than in Geneva City Schools, which takes advantage of this and all other aspects of Geneva to support students on a path towards lives of consequence.

## STUDENT INFORMATION

### Three Year Enrollment Change:

2025-2026	2024-2025	2023-2024
1,074	1,108	1,264

### Number/Grade level of Buildings:

(1) UPK-4 (1) 5-8 (1) 9-12

### AVERAGE CLASS SIZE:

K-3	4-6	7-8*	9-12*
19	18	18	17

\*English & Social Studies



# Newark Central School District

100 East Miller Street, Newark, NY 14513

Website: [www.newarkcsd.org](http://www.newarkcsd.org)

Phone: (315) 332-3230

Superintendent: Susan Hasenauer

Email: [susan.hasenauer@newarkcsd.org](mailto:susan.hasenauer@newarkcsd.org)

Fax: (315) 332-3517

Contact Person: Dina Calapiz

Email: [dina.calapiz@newarkcsd.org](mailto:dina.calapiz@newarkcsd.org)

## FINANCIAL INFORMATION

2025-2026 Budget: \$64,971,352

### True Value Tax Rate:

2025-2026	2024-2025	2023-2024
\$12.97	\$13.48	\$15.61

Approved Oper. Expend./Pupil: \$17,638

Dist. Wealth/Pupil: \$144,342

## TRANSPORTATION

Square Miles: 61.02

Bused: 1,307 Walkers: 445

## STAFF:

Instructional Staff: 265 Support Staff: 126

## EDUCATIONAL PROGRAMS

Nestled between scenic Lake Ontario and the picturesque Finger Lakes region, Newark is home to Wayne County's population center. Our entire school staff is highly committed to helping each and every student achieve academic success.

Our schools offer many challenging programs for students such as Advanced Placement course in the high school, as well as college bearing classes in collaboration with Finger Lakes Community College. Students also have the opportunity to become prepared for college engineering courses through a partnership with Rochester Institute of Technology (RIT) "Project Lead the Way" Program (PLTW). Newark Middle School offers a variety of individualized programs such as Advanced Art, General Music, Enrichment, Biology, Algebra, as well as a two-year Foreign Language program that prepares students for extended studies at NHS. Our grades 3-5 building, Kelley Intermediate School emphasizes targeted student learning, strong PBIS and MTSS structures, leveraging student voice through town hall meetings and parent involvement to build a community school focused on improved results. Our two primary schools, Perkins and Lincoln Schools, provide a strong, integrated academic program for all students, focusing on the foundation skills they need to their early learning years.

## COMMUNITY

Located along the vibrant Erie Canal, the Village of Newark is situated between the major cities of Rochester and Syracuse. Newark's quaint, tree-lined streets are pleasant and inviting. The Village of Newark and Town of Arcadia, which make up the majority of our school district, are home to approximately 14,000 residents. The Village offers numerous recreation and sports venues. Our many parks provide baseball and softball fields, as well as playground equipment. The K&M DeMay Skate Park offers a place for skateboarding and rollerblading, and the Alex Eligh Community Center provides recreational and social activities for the youth of our community, as well as an affordable lunch program for our senior citizens. Working collaboratively, our school district and Chamber of Commerce sponsor what has become a beloved annual holiday tradition-the Rochester Philharmonic Orchestra performing each year in early December at NHS.

## STUDENT INFORMATION

### Three Year Enrollment Change:

2025-2026	2024-2025	2023-2024
1,752	1,815	1,922

### Number/Grade level of Buildings:

((2) UPK-2 (1) 3-5 (1)6-8 (1) 9-12

### AVERAGE CLASS SIZE:

K-3	4-6	7-8*	9-12*
18	16	17	17

\*English & Social Studies

## DESIGNING FOR FUTURE GENERATIONS SINCE 1968



KNOWLEDGEABLE



CREATIVE



COMMITTED



## PRACTICING K-12 ARCHITECTURE IN WNY FOR OVER 50 YEARS

5757 Main Street, Williamsville, NY 14221 | 716-633-9000 | [gwjarchitects.com](http://gwjarchitects.com)

# Marion Central School District

4034 Warner Road, Marion, NY 14505

Website: [www.marioncs.org](http://www.marioncs.org)

Phone: (315) 926-2300

Superintendent: Dr. Ellen Lloyd

Email: [elloyd@marioncs.org](mailto:elloyd@marioncs.org)

Fax: (315) 926-5797

Contact Person: Sandy Friday

Email: [sfriday@marioncs.org](mailto:sfriday@marioncs.org)

## LOCATION

Marion Central School is located in Wayne County, about 20 miles east of Rochester on Route 21, north of Palmyra and south of Williamson. The district includes portions of seven townships and covers approximately 32 square miles with a total population of about 5,000.

## FINANCIAL INFORMATION

2025-2026 Budget: \$23,540,850

### True Value Tax Rate:

2025-2026	2024-2025	2023-2024
\$14.49	\$10.61	\$12.76

Approved Oper. Expend./Pupil: \$20,087

Dist. Wealth/Pupil: \$243,995

## TRANSPORTATION

Square Miles: 32

Bused: 576 Walkers: 27

Comments: Students within 1/3 of a mile from school buildings are not bused. Cluster bus stops have been established.

## EDUCATIONAL PROGRAMS

Nestled within the rolling drumlins and orchards of Wayne County, the Marion Central School District offers a convenient 23-mile commute to the city of Rochester. The small student body of roughly students allows the faculty and staff to provide each student with a highly personalized learning experience. The district has received national recognition for its leadership in personalized learning. As we embrace our small town values and charm, we are committed to establishing a progressive and innovative culture within our schools and providing every student with equitable learning opportunities. Our award winning music, arts, and athletic programs, combined with our various club offerings, reflect our ongoing commitment to developing the whole child. The District has recently expanded its agricultural programming options to include an agricultural education pathway (Agripath) for students in grades 9-12, in collaboration with WFL BOCES. We are proud of our Black Knight Learning Community and our vision of being, *the leader in growing future ready generations.*

## COMMUNITY

The village of Marion is located approximately 15 miles east of Penfield and 6 miles north of Palmyra on Route 21 in Wayne County. The school district is the largest employer in the village. Potatoes and onions thrive on rich much land and apple orchards dot the scenic landscape. While there are some dairy farms throughout the community, the agricultural base is comprised of cash crop farming. The city and suburbs of Rochester also provide employment to many community residents.

The School district enjoys strong community support and active involvement in school-related activities.

# Honeoye Central School District

8528 Main Street, P.O. Box 170, Honeoye, NY 14471

Website: [www.honeoye.org](http://www.honeoye.org)

Phone: (585) 229-5171

Superintendent: Natalie Pfluke

Email: [natalie.pfluke@honeoye.org](mailto:natalie.pfluke@honeoye.org)

Fax: (585) 229-5633

Contact Person: Jennifer Green

Email: [jennifer.green@honeoye.org](mailto:jennifer.green@honeoye.org)

## LOCATION

Nestled in one of the most popular and beautiful recreational and resort areas of New York State, the Honeoye Central School District covers 86 square miles just inside the western border of Ontario County. Situated 30 miles south of Rochester, the Honeoye region features green valleys, hills rising to more than 2,000 feet and three picturesque lakes. Tourists enjoy swimming boating, and fishing during the summer months and skiers visit several popular resorts in the winter.

The year round population density is concentrated along the shores of Honeoye Lake. A variety of retail businesses, light industrial complexes and family farm operations can be found in the community of Honeoye.

Our school campus serves as the center of community activity including adult education programs, recreational activities and meeting sites for various groups and organizations. Residents take great pride in the district's on-going commitment to meeting the needs of all its students, parents, and community residents in a personal way.

## FINANCIAL INFORMATION

2025-2026 Budget: \$20,596,240

### True Value Tax Rate:

2025-2026	2024-2025	2023-2024
\$9.78	\$10.61	\$12.76

Approved Oper. Expend./Pupil: \$22,408

Dist. Wealth/Pupil: \$283,857

## TRANSPORTATION

Square Miles: 86

Bused: 509 Walkers: 0

Comments: Transportation is available and provided for all students. They can choose not to use the school transportation.

## EDUCATIONAL PROGRAMS

The Honeoye Central School District is proud of its long standing tradition of rich academic programming. From PreK to Gemini offerings at the secondary level, HCS provides a continuum of personalized learning experiences to meet the needs of all students. Academic programming includes a Multi Tiered System of supports, enrichment, and 1:1 device integration. Students additionally have access to a plethora of asset building experiences in the areas of music, fine arts, drama, athletics, and extracurricular clubs.

## STUDENT INFORMATION

### Three Year Enrollment Change:

2025-2026	2024-2025	2023-2024
509	547	531

### Number/Grade level of Buildings:

(1) UPK-12

### AVERAGE CLASS SIZE:

K-3	4-6	7-8*	9-12*
4	5	8	7

\*English & Social Studies

## STAFF

Instructional Staff: 95

Support Staff: 56

# Lyons Central School District

10 Clyde Road, Lyons, NY 14489

Website: [www.lyonscsd.org](http://www.lyonscsd.org)

Phone: (315) 946-2200

Fax: (315) 946-2205

Superintendent: Dr. Matthew Barr

Contact Person: Michael Pangallo

Email: [matthewbarr@lyonscsd.org](mailto:matthewbarr@lyonscsd.org)

Email: [mpangallo@lyonscsd.org](mailto:mpangallo@lyonscsd.org)

## LOCATION

Located along-side the historic Erie Canal, Lyons serves as the county seat for Wayne County. Lyons is a friendly, rural community of approximately 6000 residents that lies midway between Rochester and Syracuse and only minutes north of the New York State Thruway. Many residents are employed by local businesses including: Jamko, Empire Merchants North, Silgan Corporation, Ruspak, and Lyons National Bank. Many are county workers, while others work on farms or commute to Rochester or neighboring communities for employment. Recreational facilities in the area include: 18-hole golf course, a community center, fitness centers, hiking, hunting, sailing, skiing, and other outdoor activities.

## FINANCIAL INFORMATION

2025-2026 Budget: \$32,929,312

### True Value Tax Rate:

2025-2026	2024-2025	2023-2024
\$11.32	\$13.04	\$13.94

Approved Oper. Expend./Pupil: \$17,434

Dist. Wealth/Pupil: \$120,483

## TRANSPORTATION

Square Miles: 62.5

Bused: 539 Walkers: 423

Comments: Transportation is provided to all required students, Pre-School students and students with disabilities. In addition, students living on Elmer and Shuler Streets are bused because of state highway safety concerns.

## EDUCATIONAL PROGRAMS

Lyons School District residents desire a well-rounded quality educational program which is designed to meet the needs of a diverse community. The school District is especially proud of its academic programs, which includes college level courses in English Economics, Pre-Calculus, Calculus, Spanish, and US History and Government. Several high school students belong to the National Honor Society, as well.

Other features of the Lyons School Community include a 1:1 Chromebook Initiative and elementary & High school enrichment programs. Lyons has a full range of interscholastic sports including football, soccer, basketball, wrestling, baseball, track, and a variety of life long individual sports. Students interested in extra-curricular activities have a variety of life long individual sports. Students interested in extra-curricular activities have a variety of clubs to choose from including masterminds, science, art, varsity club, and student council, among others.

## COMMUNITY

Lyons is marked by a historic downtown business area which still contains numerous family-owned shops, historic churches, vintage theater, courthouse, and quaint village park and side street neighborhoods.

A network of close community members celebrate the village's heritage each year with the Peppermint Days Festival and Peppermint Winter Wonderland commemorating Lyons as the once "Peppermint Capital of the World". Many charming hand-painted murals dot the village depicting its historic background.

## Manchester-Shortsville Central School (continued)

Student Council, Robotics, Masterminds, Golf, Bowling Art and Yearbook Club are also offered.

As part of a 12 Million Dollar Capital Project, in 2019, Red Jacket's Family and Consumer Science (FACS) classroom and locker rooms underwent progressive renovations to bring them into the modern era. Red Jacket is the first of its kind to eliminate PE locker rooms for secondary students (grades 6-12) and replace them with individual changing rooms so that all students are treated with the dignity and respect they deserve. Individual shower and changing room combinations will allow those students who wish to shower, the opportunity to shower and change their clothes in private.

## COMMUNITY

Red Jacket graduating seniors, with graduating classes ranging between 60-80 students, benefit from the community's generosity through their scholarship donations. There are approximately 58 different scholarships and approximately 96 scholarships offered with the total amount averaging close to \$130,000 any given school year. Beginning in 2018, and each year moving forward, Red Jacket students benefit from the Philip Bredesen Scholarship. Throughout our history, there are District residents and graduates of Red Jacket Schools who have achieved national recognition. Philip Bredesen moved to his mother's family home in Shortsville in 1951 where he attended our school until he graduated. After attending Harvard College, he founded a very successful insurance company called HealthAmerica Corp that was publicly traded on the New York Stock Exchange. In 1986, he sold his controlling interest in the company after he had earned considerable wealth. He became Mayor of Nashville in 1991, and by 1994, he became the 48<sup>th</sup> Governor of the State of Tennessee. Governor Bredesen made significant contributions aimed at improving health care, improving education, reforming the worker's compensation system, launching war on methamphetamine use, and protecting ecologically significant land.

In 1945, when Manchester merged with Shortsville to form a centralized school district, Red Jacket School emerged, with the first class graduating in 1950. To this day, the school remains the common denominator between these historically proud, connected communities and Red Jacket is one school and name that unifies them.

Rich in history and pride, visitors to this community will notice remnants of the well-known Lehigh Valley Railroad, which was once the largest freight yard in the world and also touted the luxurious Black Diamond Express passenger train, known as the handsomest passenger train in the world! Community members enjoy the rich railroad history when they see an original Roundhouse as they travel through the town or when they dine at the historic Depot Restaurant. Families appreciate affordable housing in a close-knit community with well-maintained parks, a scenic fitness nature trail and miles of snowmobile trails. The annual Wild Water Derby brings the community together for lively fun and adventure as individuals or teams travel down the Canandaigua Outlet in homemade vessels, rafts, canoes or kayaks.

The community's highly active youth football, cheerleading, wrestling, basketball, softball, baseball, and travel soccer programs provide organized athletic opportunities for children within the community. These early sports opportunities bring children throughout the community together and they form relationships that will last throughout their entire school career at Red Jacket. The strong bonds that form may very well be one factor that has helped Red Jacket sports teams achieve so much success. Red Jacket PRIDE (Partnership, Respect, Integrity, Dignity and Excellence) links the school and community with unmatched strength and unity.

For more information about Red Jacket Schools, please visit our website at [www.redjacket.org](http://www.redjacket.org), join us on Facebook, YouTube, Twitter, Instagram or contact the school directly.

## STUDENT INFORMATION

### Three Year Enrollment Change:

2025-2026	2024-2025	2023-2024
962	904	893

### Number/Grade level of Buildings:

(1) UPK-6 (1) 7-12

### AVERAGE CLASS SIZE:

K-3	4-6	7-8*	9-12*
15	16	15	13

\*English & Social Studies

### STAFF:

Instructional Staff: 123

Support Staff: 124

**The Red Jacket Middle School (6-8)** offers a comprehensive, rigorous academic program in a small, friendly school atmosphere that allows easy access to teachers, the school counselor and principal. Teachers recognize the unique needs of adolescents and provide a supportive, nurturing classroom environment to address the social and emotional needs of students at this age.

The middle school core team, led by the middle school principal, work collaboratively to analyze student performance data and design targeted instruction. During grade level, common planning times, they engage in ongoing work to refine horizontal and vertical curriculum for alignment. The common planning times also provides students and parents with opportunities to meet as an integral part of the grade level teams to actively participate in planning that is focused on continuous improvement.

The Red Jacket Middle School team creates unique opportunities for students. Some of our students enjoy working in the school's greenhouse where they can have hands-on experience growing plants and vegetables. In addition to Student Council, where students learn leadership skills, the middle school offers students: LINKS (Leadership, Integrity, Nobility, Kinship, Success), which is a service-oriented club, Student Store, Video Editing, Kickball, Grow It, Nature Movie and the App Club for students interested in piloting different apps. The club offerings change periodically to keep students interested. Some past clubs have been CNN Club, Computer Gaming, Green, Improvisation, and Coding Club.

Through the work of the Student Council, a variety of evening activities are also planned by students and their advisor. Some of the events are: Movie Night, Roller Skating, Dances, Open Gym and other activities. All eighth-grade students have the opportunity to tour Washington DC as part of the Social Studies curriculum and all middle school students have the opportunity to earn a day of fun at Seabreeze Amusement Park as part of the school's Positive Behavioral Intervention Support (PBIS) initiative. Middle School students also have a variety of modified sports to choose from while also participating in the school musical and school concerts.

**Red Jacket High School (9-12)** has been, once again, named to US News & World Report's Best High Schools in America based on state proficiency tests for math and English and Advanced Placement (AP) test data. The vast majority of Red Jacket's seniors graduate with college credits and 70% of Red Jacket's juniors and seniors take AP, Gemini or other college-level courses. In addition to these course options, Red Jacket offers an excellent selection of fine arts courses to choose from. Students excel in the areas of art and music because their dedicated, talented teachers have the ability to provide individualized attention that can be provided in small class settings.

Red Jacket also offers online classes for just about any elective area, as well as more traditional courses, such as, Computer Programming; Drawing, Design, and Production; Robotics; Graphic Arts; Media Arts; and Business Applications. Red Jacket is committed to creating and providing opportunities for students to get a head start on exploring college and career options. Along with creating positive memories that will last a lifetime, Red Jacket aims to empower students, give them choices, and create opportunities for them that will prepare them for a highly technical and competitive global workforce.

All students at Red Jacket High School have the opportunity to be involved in athletics and the school musical. The Red Jacket Flying Club provides students, interested in the field of aviation, with flying and aviation experiences. The high school also offers Clay Target League Club where students participate in safety training and orientation, before they can shoot at the Shortsville Rod and Gun Club and compete against other schools.

SEE HOW  
impactful



CAN BE



**Experience the Fisher  
difference to make one.**

St. John Fisher University has a way of bringing out your best through an ever-connected and collaborative experience, raising standards of personal and professional success beyond good to greater than ever thought possible—in and out of the classroom, with and for the community. We inspire lifelong learning, leadership, and engagement so you're more than career-ready, you're ready to shape a better future for all.

**Schedule a campus visit at  
[go.sjf.edu/visitfisher](http://go.sjf.edu/visitfisher).**

# Manchester-Shortsville Central School District

400 1506 Route 21, Shortsville, NY 14548

Website: [www.redjacket.org](http://www.redjacket.org)

Phone: (585) 289-3964

Fax: (585) 289-6660

Superintendent: Christopher Barnard

Contact Person: Roxie O'Brien

Email: [christopher.barnard@redjacket.org](mailto:christopher.barnard@redjacket.org)

Email: [roxie.obrien@redjacket.org](mailto:roxie.obrien@redjacket.org)

## LOCATION

Manchester-Shortsville Central School District, also known as Red Jacket, is a progressive school district located 30 miles southeast of Rochester, in the heart of the beautiful Finger Lakes Region. Thruway Exit 43, near the geographic center of the school district, provides easy access to the Finger Lakes, Lake Ontario, and the cities of Rochester, Syracuse and Buffalo. Red Jacket draws its students primarily from the villages of Manchester and Shortsville and also serves students from parts of the townships of Manchester, Farmington and Hopewell. The villages, in central Ontario County, are located just east of Victor and near the northern shore of Canandaigua Lake, with its beautiful parks and recreation facilities.

## FINANCIAL INFORMATION

2025-2026 Budget: \$23,592,413

### True Value Tax Rate:

2025-2026	2024-2025	2023-2024
15.67	\$17.77	\$19.79

Approved Oper. Expend./Pupil: \$17,390

Dist. Wealth/Pupil: \$175,336

## TRANSPORTATION

Square Miles: 34.32

Bused: 563 Walkers: 173

## EDUCATIONAL PROGRAMS

**Red Jacket's Mission:** We challenge all learners and work in partnership with students, parents and community to achieve high standards. Red Jacket is a small public school with a private school feel; providing students with an outstanding education, state of the art technology, individualized attention and the ability to participate in a wide variety of extracurricular activities. Students at Red Jacket benefit from the personalized attention that occurs in small schools with smaller student to adult ratios.

**All students in grades K-12**, have their own Chromebooks to use at school and at home during the school year. A Chromebook is a type of laptop computer that is optimized online, but also works offline and stores information on the cloud instead of on the devices or on a local network. This allows Red Jacket students to have access to numerous digital tools, texts and various multimedia platforms at home and in school. While Red Jacket's teachers

## Manchester-Shortsville Central School (continued)

use a variety of digital courseware platforms, such as Khan Academy, Google Drive or iTunes University, Google Classroom has transformed teaching and learning at Red Jacket. This web tool allows teachers to post and create interactive opportunities for online collaboration between the teacher and their students by using instructional videos, audio, visual displays, documents, text, notes, just about anything imaginable.

Red Jacket's infrastructure and wireless networks are among the strongest in the area. In addition to the Chromebooks, every classroom features Smart Boards that are used to increase interactive learning experiences, and every student has use of a variety of other technology devices through the mobile iPad and iPod labs, desktop labs or document cameras and digital cameras that allow students to create vibrant and engaging presentations. Students have access to numerous databases, apps and movie production software and equipment to engage their senses, pique their curiosity, encourage creativity, and intensify learning experiences.

Safety and security are a priority at Red Jacket. Red Jacket has a full time School Resource Officer (SRO). Through the 2013 capital project work that was completed, each classroom, restroom, and office space door was equipped with deadbolt locks that allow students or staff the ability to quickly lock themselves into spaces. Additionally, classroom door windows and glass entrances were treated with security film, motion detection LED lighting was installed, and security cameras were installed throughout the campus, including exterior spaces. The 12-Million Dollar Capital Project that was approved by the voters in 2017, included creating secure entrances for the District Office and Middle School entrance. Red Jacket has always taken safety and security very seriously by studying tragic events, practicing emergency response drills, and engaging in ongoing training for staff, in collaboration with law enforcement.

**The Red Jacket Elementary School (UPK/Pre-K-5)**, starting with a full day Universal Pre-Kindergarten (UPK) program and Pre-Kindergarten program, is committed to meeting the unique needs of every child. The Elementary School team is friendly, nurturing, and passionate about their work. They are dedicated to using data and student work to drive their instruction in order to challenge all students. The balanced literacy approach used, led by in-house Literacy Specialists, has provided elementary level teachers with proven, research-based strategies and job-embedded coaching to refine instructional practices to address individual student needs.

More than half of Red Jacket's Elementary School classroom teachers have Literacy or Reading Certification in addition to their General Education Teacher Certification. The work being done has drastically lowered the number of students requiring reading intervention services and has pushed students to reach their potential. There are new teachers working toward the additional Literacy Certification because the District is committed to providing its students with exceptionally qualified teachers. In addition to the Literacy Specialist, the Elementary School has three literacy teachers to provide specialized, small group and individual reading support to students.

The school's strong fine arts program, including a wide range of artistic mediums and materials, and the music, chorus, and band programs provide students with exceptional instruction that help students experience the feeling of success early on and lays the foundation for success in the arts throughout later grades.

The Red Jacket PTSA is very active within the schools, especially in the elementary school. They work closely with the principal and staff to plan events that support the school and the school's mission. Each year they plan Family Matters Night, festive Halloween activities and numerous other activities and events.

*(continued on next page)*